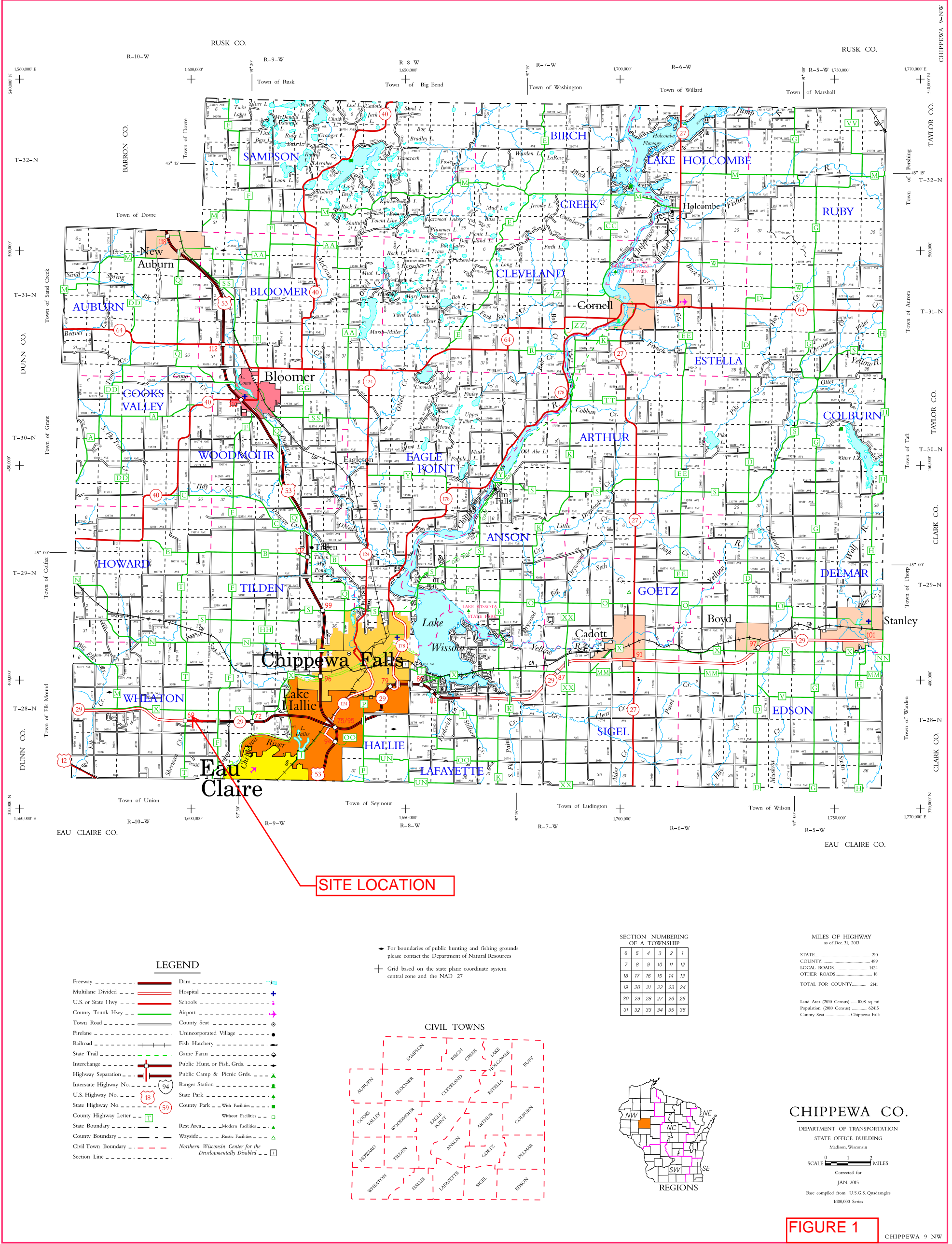


Appendix 1

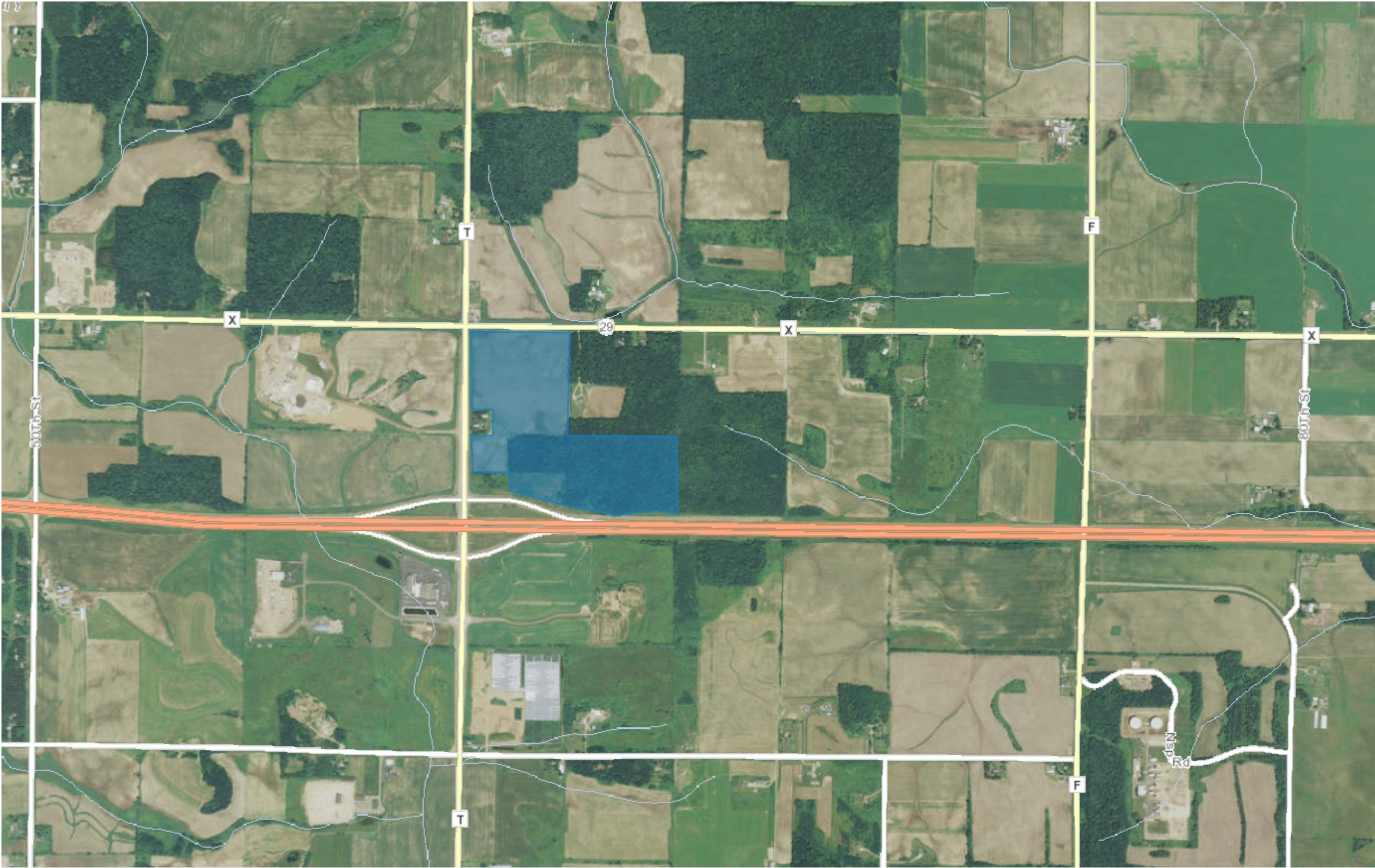
Figures



Surface Water Data Viewer Map



- Legend**
- Rivers and Streams
 - Open Water



1: 14,203



0.4 0 0.22 0.4 Miles

NAD_1983_HARN_Wisconsin_TM
© Latitude Geographics Group Ltd.

This map is a user generated static output from an Internet mapping site and is for reference only. Data layers that appear on this map may or may not be accurate, current, or otherwise reliable.
THIS MAP IS NOT TO BE USED FOR NAVIGATION

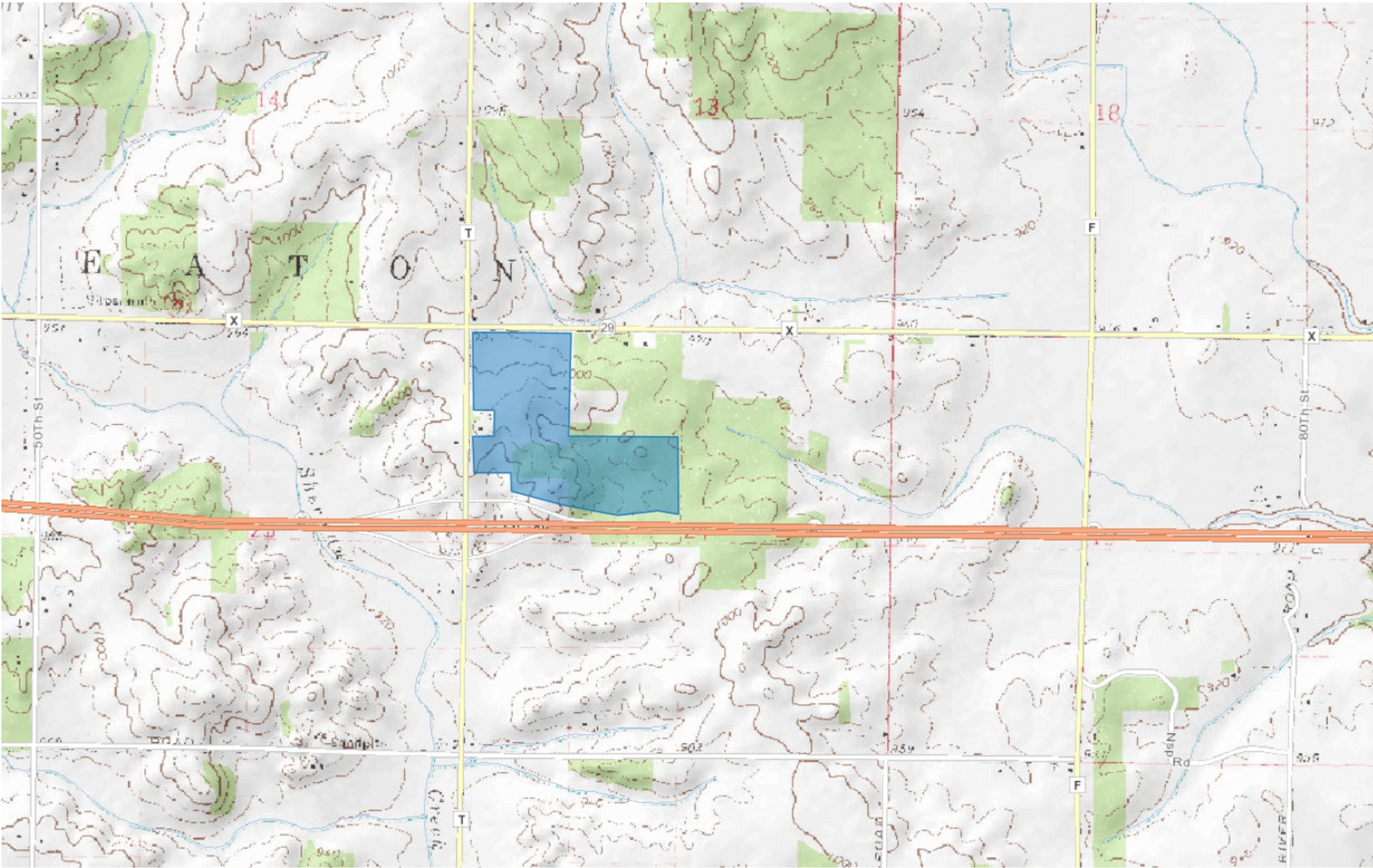
Notes

FIGURE 2

Surface Water Data Viewer Map



- Legend
- Rivers and Streams
 - Open Water



1: 14,203



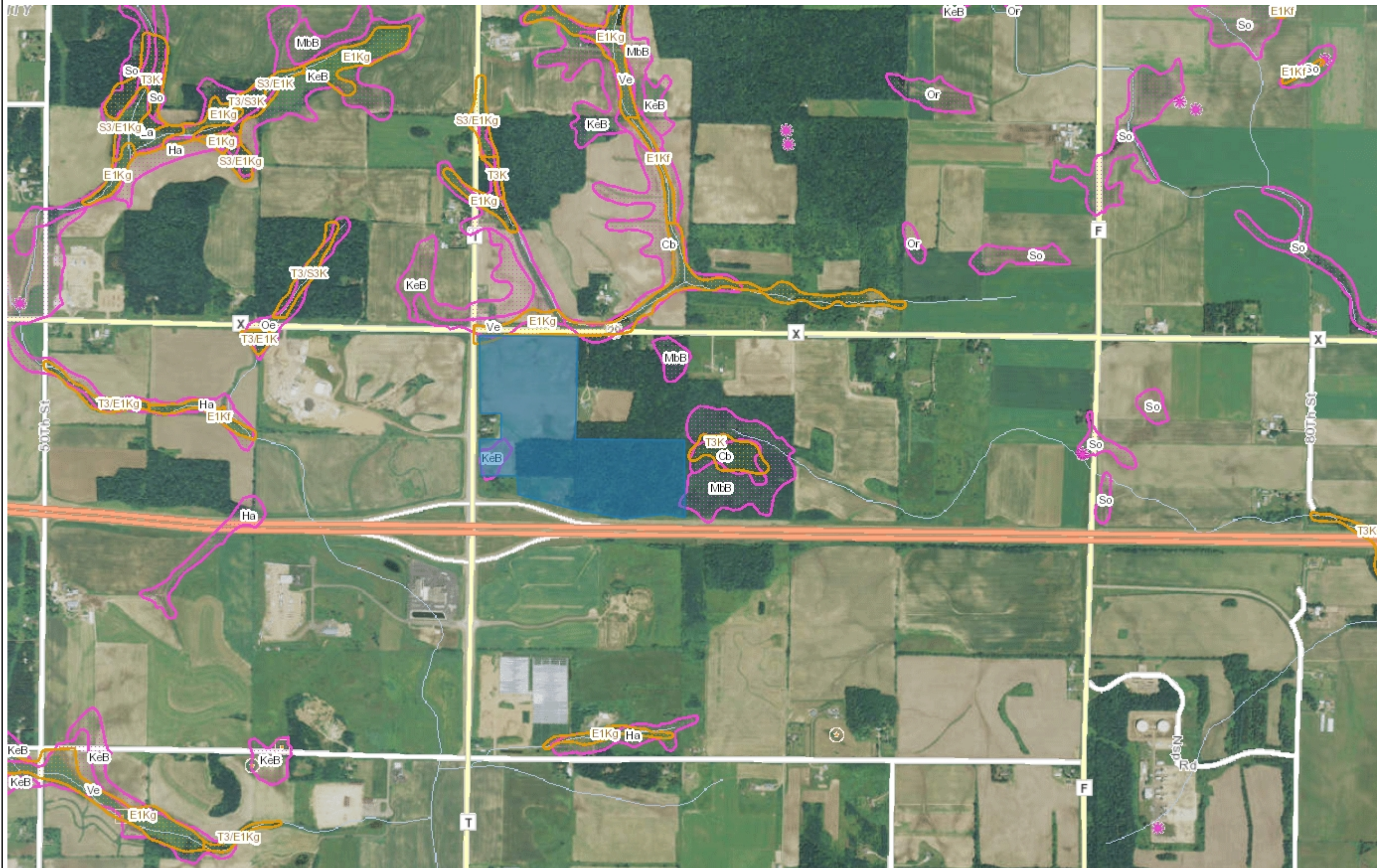
0.4 0 0.22 0.4 Miles

NAD_1983_HARN_Wisconsin_TM
© Latitude Geographics Group Ltd.

This map is a user generated static output from an Internet mapping site and is for reference only. Data layers that appear on this map may or may not be accurate, current, or otherwise reliable.
THIS MAP IS NOT TO BE USED FOR NAVIGATION






Notes

FIGURE 3









Legend

Wetland Class Points

-  Dammed pond
-  Excavated pond
-  Filled excavated pond
-  Filled/drained wetland
-  Wetland too small to delineate

Filled Points

Wetland Class Areas

-  Wetland
-  Upland
-  Filled Areas
-  NRCS Wetspots
-  Wetland Indicators
-  Rivers and Streams
-  Open Water

1: 14,203



Notes

FIGURE 4

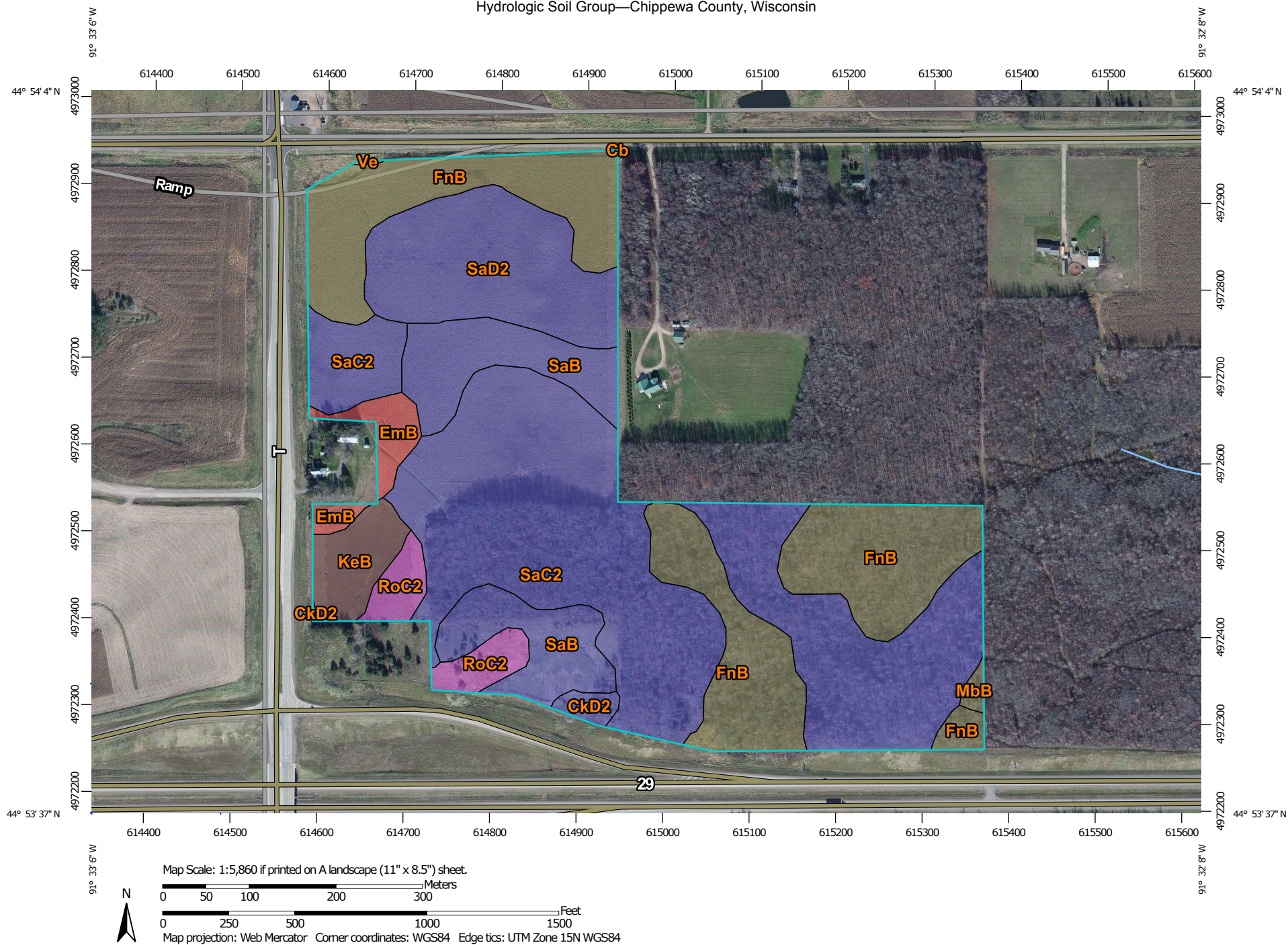
0.4	0	0.22	0.4 Miles
-----	---	------	-----------

NAD_1983_HARN_Wisconsin_TM
© Latitude Geographics Group Ltd.

This map is a user generated static output from an Internet mapping site and is for reference only. Data layers that appear on this map may or may not be accurate, current, or otherwise reliable.

THIS MAP IS NOT TO BE USED FOR NAVIGATION

Hydrologic Soil Group—Chippewa County, Wisconsin



Natural Resources
Conservation Service

Web Soil Survey
National Cooperative Soil Survey

2/18/2016
Page 1 of 4

FIGURE 5

MAP LEGEND

Area of Interest (AOI)









 Area of Interest (AOI)

Soils

Soil Rating Polygons





 A
 A/D
 B
 B/D
 C
 C/D
 D
 Not rated or not available

Soil Rating Lines

 A
 A/D
 B
 B/D
 C
 C/D
 D
 Not rated or not available

Soil Rating Points






 A
 A/D
 B
 B/D

 C
 C/D
 D
 Not rated or not available

Water Features

 Streams and Canals

Transportation

 Rails
 Interstate Highways
 US Routes
 Major Roads
 Local Roads

Background

 Aerial Photography

MAP INFORMATION

The soil surveys that comprise your AOI were mapped at 1:15,800.

Warning: Soil Map may not be valid at this scale.

Enlargement of maps beyond the scale of mapping can cause misunderstanding of the detail of mapping and accuracy of soil line placement. The maps do not show the small areas of contrasting soils that could have been shown at a more detailed scale.

Please rely on the bar scale on each map sheet for map measurements.

Source of Map: Natural Resources Conservation Service
 Web Soil Survey URL: <http://websoilsurvey.nrcs.usda.gov>
 Coordinate System: Web Mercator (EPSG:3857)

Maps from the Web Soil Survey are based on the Web Mercator projection, which preserves direction and shape but distorts distance and area. A projection that preserves area, such as the Albers equal-area conic projection, should be used if more accurate calculations of distance or area are required.

This product is generated from the USDA-NRCS certified data as of the version date(s) listed below.

Soil Survey Area: Chippewa County, Wisconsin
 Survey Area Data: Version 11, Sep 17, 2015

Soil map units are labeled (as space allows) for map scales 1:50,000 or larger.

Date(s) aerial images were photographed: Nov 1, 2010—Nov 2, 2010

The orthophoto or other base map on which the soil lines were compiled and digitized probably differs from the background imagery displayed on these maps. As a result, some minor shifting of map unit boundaries may be evident.

Hydrologic Soil Group

Hydrologic Soil Group— Summary by Map Unit — Chippewa County, Wisconsin (WI017)				
Map unit symbol	Map unit name	Rating	Acres in AOI	Percent of AOI
Cb	Cable silt loam, 0 to 2 percent slopes	C/D	0.0	0.0%
CkD2	Chetek-Mahtomedi complex, 12 to 25 percent slopes, eroded	B	0.6	0.7%
EmB	Elk mound loam, 2 to 6 percent slopes	D	1.7	2.2%
FnB	Freeon silt loam, 2 to 6 percent slopes	C/D	20.5	25.7%
KeB	Kert silt loam, 1 to 6 percent slopes	B/D	2.5	3.1%
MbB	Magnor silt loam, 0 to 4 percent slopes	C/D	0.3	0.3%
RoC2	Rosholt sandy loam, 6 to 12 percent slopes, eroded	A	2.4	3.0%
SaB	Santiago silt loam, 2 to 6 percent slopes	B	8.5	10.6%
SaC2	Santiago silt loam, 6 to 12 percent slopes, eroded	B	34.0	42.6%
SaD2	Santiago silt loam, 12 to 20 percent slopes, eroded	B	9.4	11.7%
Ve	Vesper silt loam, 0 to 2 percent slopes	C/D	0.0	0.0%
Totals for Area of Interest			79.8	100.0%

Description

Hydrologic soil groups are based on estimates of runoff potential. Soils are assigned to one of four groups according to the rate of water infiltration when the soils are not protected by vegetation, are thoroughly wet, and receive precipitation from long-duration storms.

The soils in the United States are assigned to four groups (A, B, C, and D) and three dual classes (A/D, B/D, and C/D). The groups are defined as follows:

Group A. Soils having a high infiltration rate (low runoff potential) when thoroughly wet. These consist mainly of deep, well drained to excessively drained sands or gravelly sands. These soils have a high rate of water transmission.

Group B. Soils having a moderate infiltration rate when thoroughly wet. These consist chiefly of moderately deep or deep, moderately well drained or well drained soils that have moderately fine texture to moderately coarse texture. These soils have a moderate rate of water transmission.

Group C. Soils having a slow infiltration rate when thoroughly wet. These consist chiefly of soils having a layer that impedes the downward movement of water or soils of moderately fine texture or fine texture. These soils have a slow rate of water transmission.

Group D. Soils having a very slow infiltration rate (high runoff potential) when thoroughly wet. These consist chiefly of clays that have a high shrink-swell potential, soils that have a high water table, soils that have a claypan or clay layer at or near the surface, and soils that are shallow over nearly impervious material. These soils have a very slow rate of water transmission.

If a soil is assigned to a dual hydrologic group (A/D, B/D, or C/D), the first letter is for drained areas and the second is for undrained areas. Only the soils that in their natural condition are in group D are assigned to dual classes.

Rating Options

Aggregation Method: Dominant Condition

Component Percent Cutoff: None Specified

Tie-break Rule: Higher