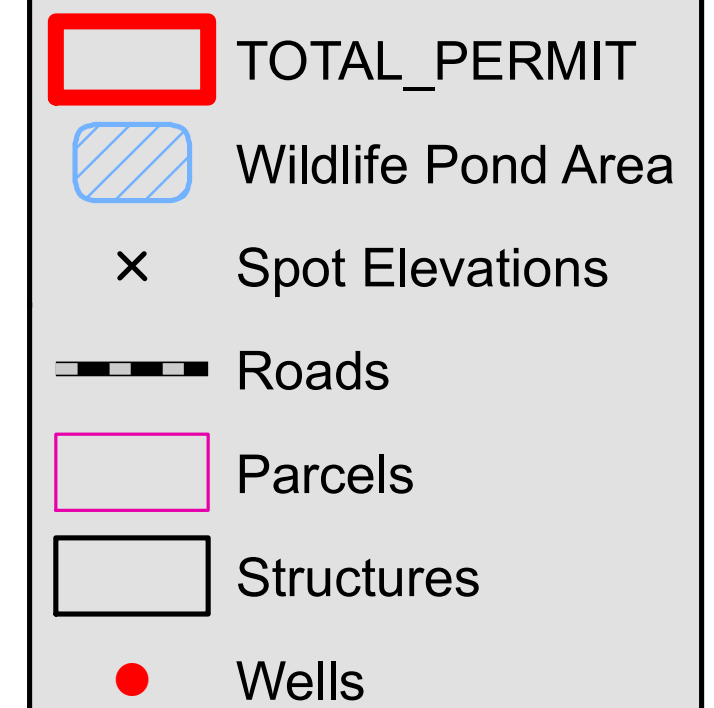


Final Site Map

Legend



1 inch = 200 feet



Notes:

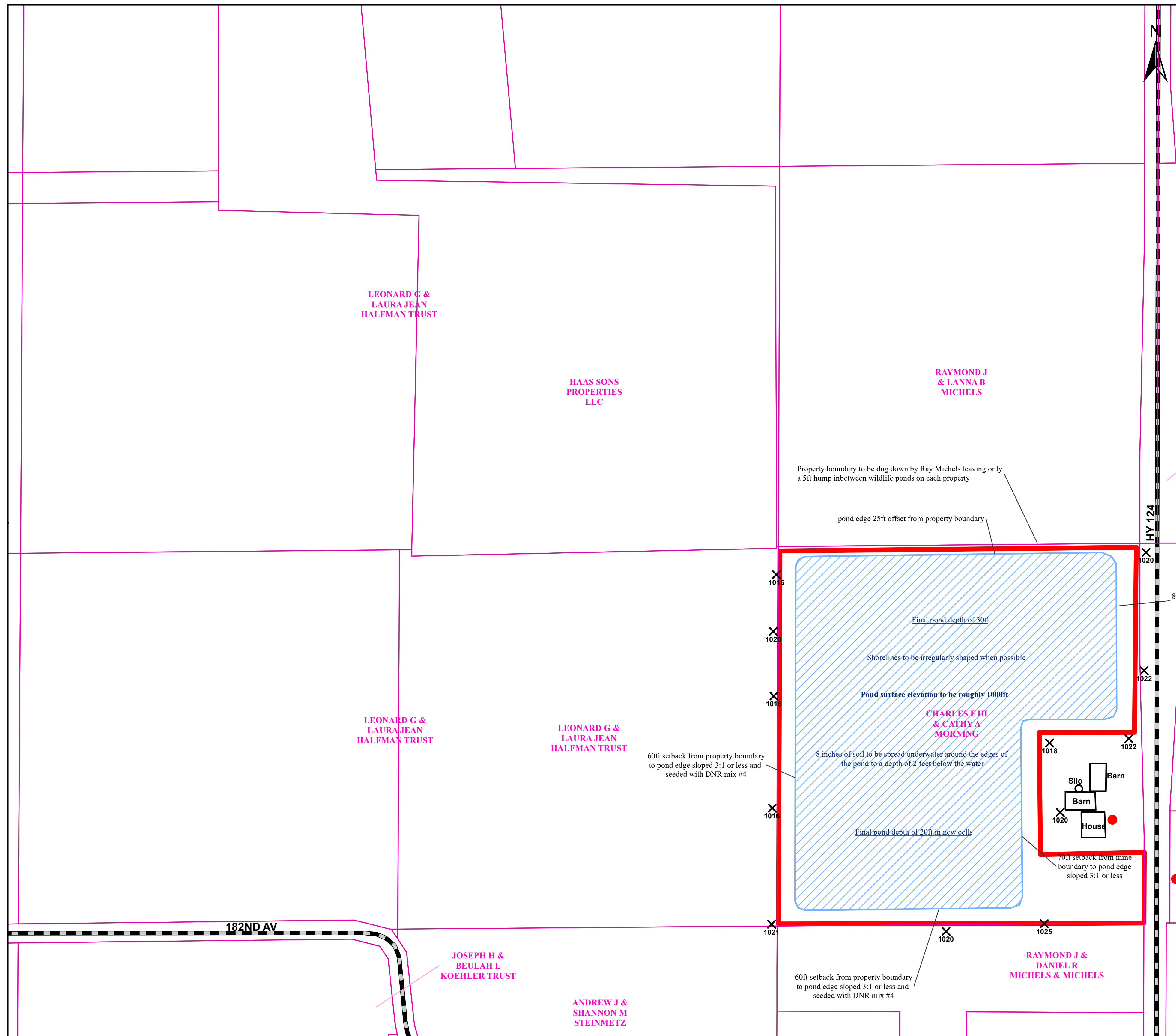
Groundwater elevation on site is roughly 1000ft (above MSL). This will be the surface elevation of the wildlife pond.

The bottom of the pond will be irregular and vary in elevation throughout due to the excavation process. Final pond depth for the existing site will be 30ft or less. Final pond depth for the proposed mine site will be around 20ft.

Spot elevations determined using Chippewa County 1 foot lidar contours.

There are no structures or roads to remain in place within the proposed mine site.

All flow for the final site will be directed toward the wildlife pond and will be internally drained.



Date: 1/15/2021

