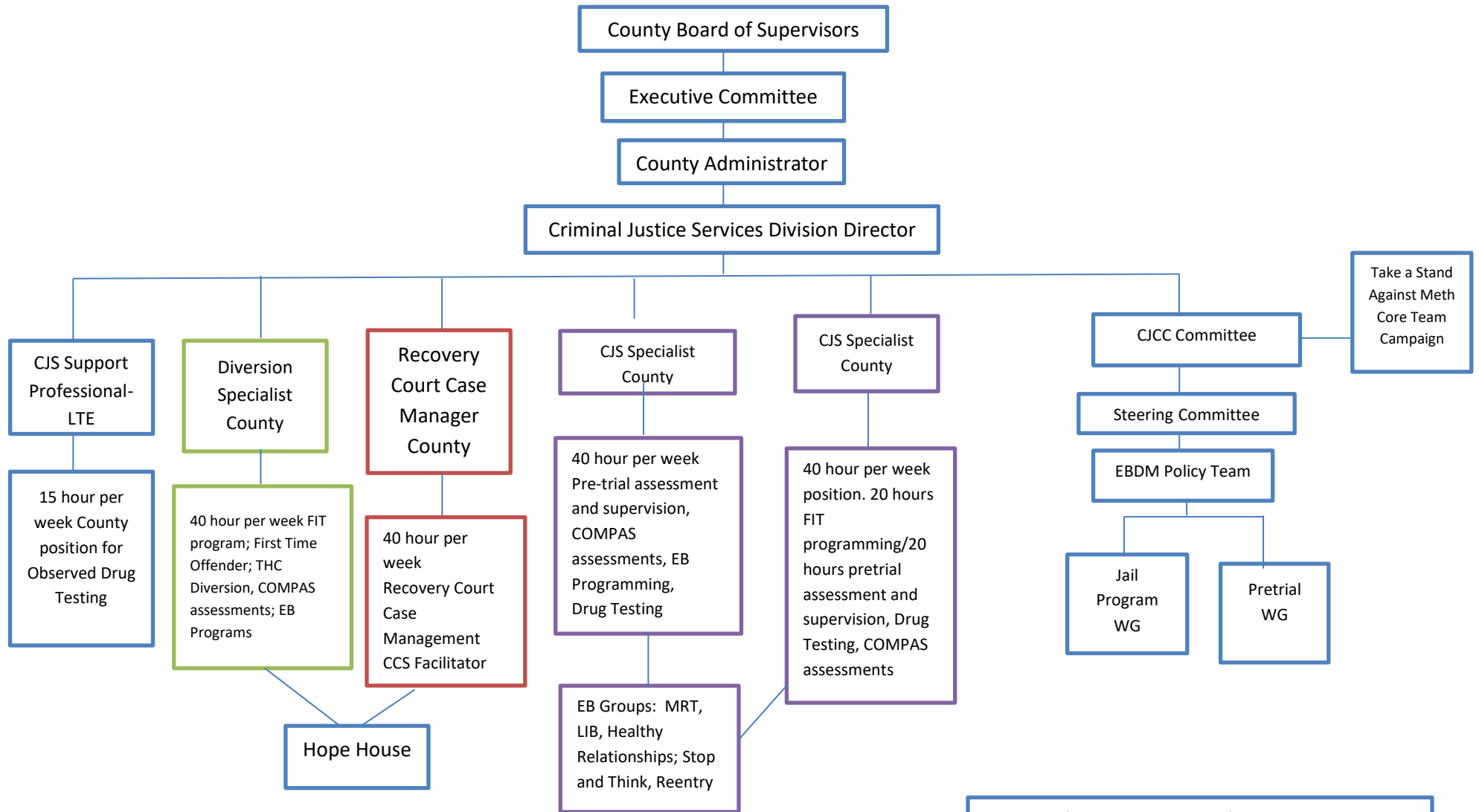


CRIMINAL JUSTICE SERVICES DIVISION
ORGANTIZATIONAL CHART- Effective 2022



CJS Director sits on the Diversion Standards Workgroup for the State
CJS Director sits on Pretrial Pilot Workgroup for the State
CJS Director sits on Recovery Team overseeing FIT and Recovery Court
CJS Director sits on the Chippewa County Overdose Fatality Review Team and the Western Region Recovery Housing Network.

DAGP- Deferred Acceptance of Guilty Plea
CFS- Call for Service
COMPAS- Risk and Need Assessment
LSS- Lutheran Social Services
CCS-Comprehensive Community Services
TAD- Treatment and Diversion
EB- Evidence Based
FIT- Front-End Intervention Treatment
MRT- Moral Reconation Therapy