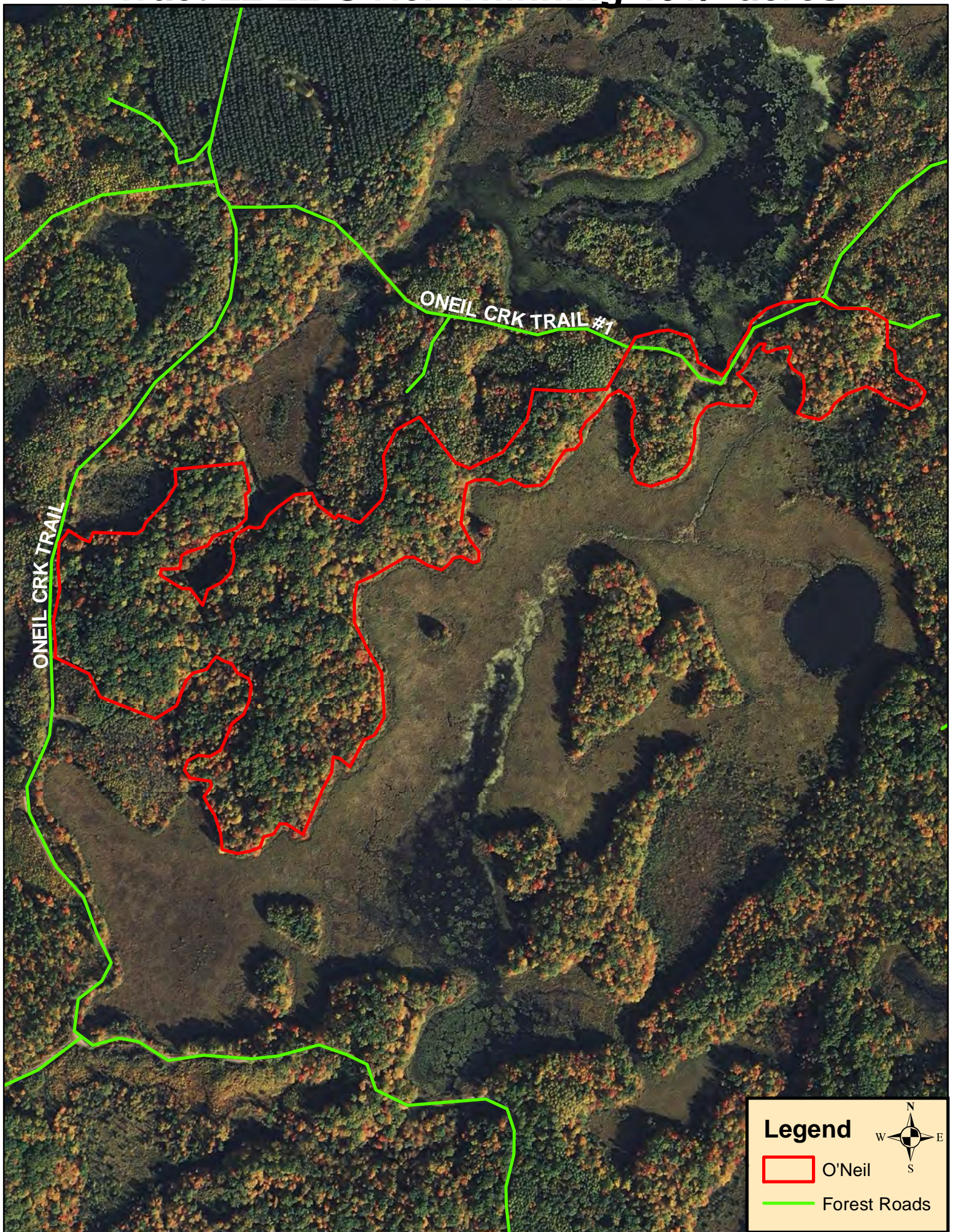


Tract 22-22 O'Neil Thinning 40+/- acres



CHIPPEWA COUNTY TIMBER SALE TRACT 22-22

O'NEIL HARDWOODS Sale

Located in Sections 3 and 4 T31N R8W Town of Cleveland

Total Sale Area: (approximately 40 acres)

The table below contains an estimate of the amount of each species/product. There is no minimum bid for each species; however **the total minimum bid that is acceptable for Tract 22-22 is \$ 26,350.00.**

Species	Amount	
	tons	MBF
Mixed Hdwd cordwood* (4" top) (4600 lbs/cord)	550	
Oak cordwood (4" top) (5500 lbs/cord)	420	
Oak logs		54
Mixed Hardwood logs		13
Basswood logs		18

Sale Area Description:

The boundaries of this sale are marked with red paint lines. A Northern Hardwood stand that is approximately 40 acres will be thinned to maintain forest health.

Cutting Requirements:

Selection Harvest: Cut all trees marked with orange paint, including non-commercial trees marked with orange paint. Do not cut sale boundary trees that are marked with red paint.

Special Conditions:

- **Harvest activity is prohibited between April 1 and July 15 due to oak wilt restrictions.**
- All logging debris must remain within the sale boundaries and kept from wetlands, lakes and trails.
- All landing locations must be approved. All merchantable timber that is removed along landings or skid trails must be utilized and accounted for through mill slips or log scales.
- *Leave all snags (dead trees) unless they present a safety hazard. Use caution to limit the disturbance of Course Woody Debris (CWD) on the forest floor. (ie) down logs greater than 12 inches in diameter.*
- All hardwood logs, (except aspen) 10" or larger on the small end will be charged at the appropriate saw log stumpage rate.
- The contract length is 2 years.

MAP IS LOCATED ON THE BACK