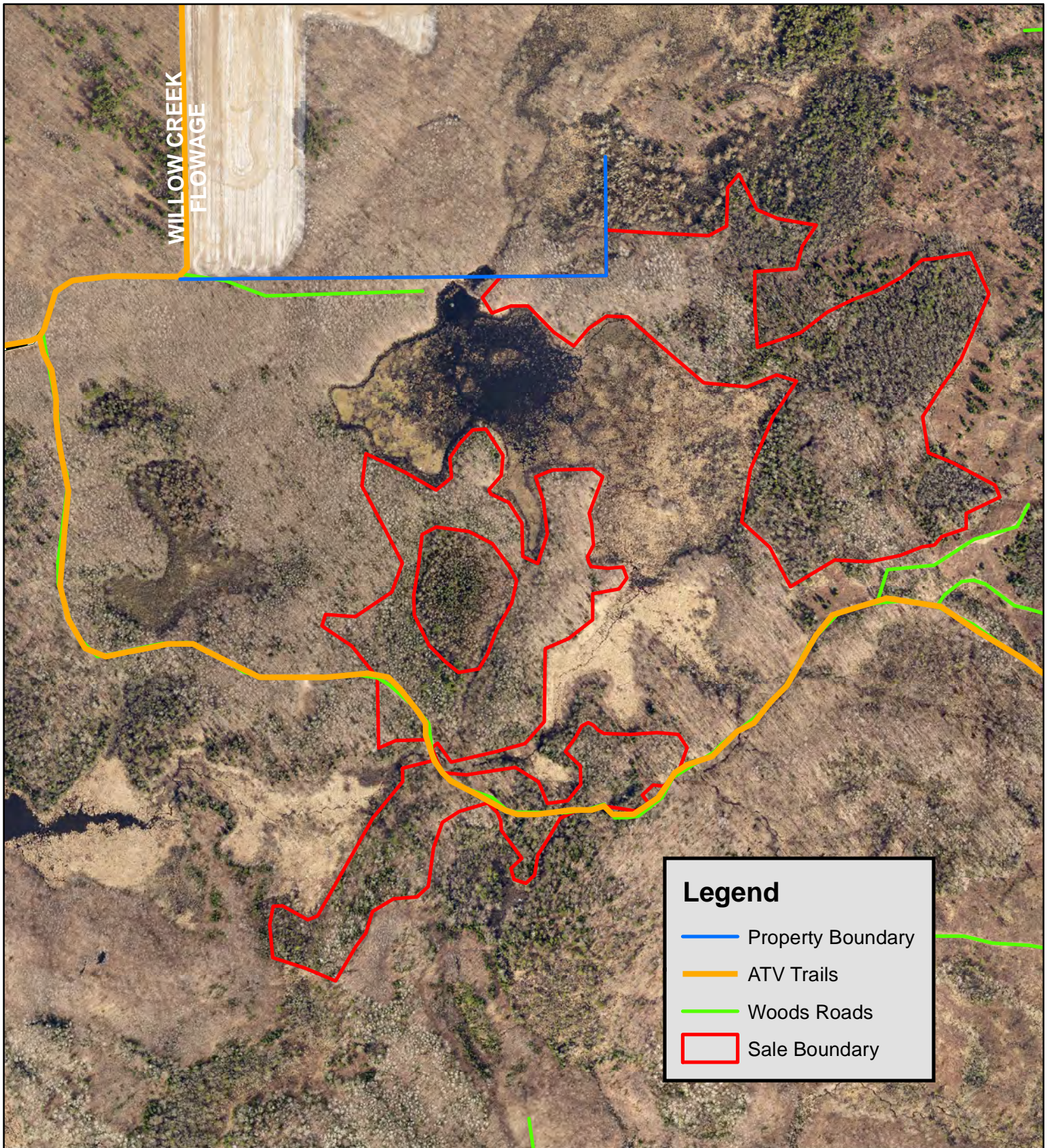


Resurrection Bay Tract 14-23

Approximately 50 acres Aspen, Ash and HW Clearcut



Map Not To Scale

CHIPPEWA COUNTY TIMBER SALE TRACT 14-23

Resurrection Bay

(approximately 50 acres)

Located in Sec. 17, 20 T32N R7W Town of Birch Creek

The table below contains an estimate of the amount of each species/product. There is no minimum bid for each species; however **the total minimum bid that is acceptable for Tract 14-23 is \$ 36,143.10.**

Species	Amount	
	Tons	MBF
Aspen cordwood	1700	
Balsam Fir	233	
Mixed Hardwood	1000	62

Sale Area Description:

This sale is a mix of aspen and hardwood clear-cuts with two areas of black ash. This sale is designated as a winter only harvest to utilize frozen ground to access otherwise inaccessible areas and utilize trees growing in wet areas. The sale surrounds a large beaver pond and is designed to harvest directly to the stand edges to create early successional beaver habitat. As well as utilize merchantable black ash. Black ash is approximately 50% of the mixed hardwood volume. Access to this sale will be from the ATV trail with possible access crossing a lowered beaver dam at the north end of the sale. Frozen edges of the lowered beaver pond can be used for access to the sale.

Cutting Requirements:

Aspen Harvest Areas: (34 acres) Cut all trees one inch in diameter and larger. **Do not** cut any boundary trees or pole sized oak.

Black Ash Harvest Areas: (16 acres) Cut all merchantable black ash. **Do not** cut trees other than black ash.

Special Conditions:

- Frozen Ground Conditions Required
- The contract length is 2 years.
- *Leave all snags (dead trees) unless they present a safety hazard. Use caution to limit the disturbance of Course Woody Debris (CWD) on the forest floor. (ie) down logs greater than 12 inches in diameter.*
- All logging debris must remain within the sale boundaries and kept from wetlands.
- All cordwood shall be utilized to a 4" top diameter.
- All hardwood logs, (except aspen) 10" or larger on the small end will be charged at the appropriate saw log stumpage rate.
- All landing locations must be approved.