

## CHIPPEWA COUNTY TIMBER SALE TRACT 17-23

### **Muscle Wood**

(approximately 17 acres)

Located in T32N R7W Section 26, Town of Birch Creek

The table below contains an estimate of the amount of each species/product. There is no minimum bid for each species; however **the total minimum bid that is acceptable for Tract 17-23 is \$ 10,325.00.**

Species	Amount	
	Tons	MBF
Aspen cordwood	700	
Mixed Hdwd cordwood	150	

### **Sale Area Description:**

This sale will be a clear-cut to coppice the aspen in the stand. The boundaries of this sale are marked with red paint line. The sale is accessed on an existing woods road from 226<sup>th</sup> st or the ATV Trail. If the ATV Trail is used from there is a bridge that cannot support Semi truck traffic. There is a bypass with a culvert downstream from the bridge. The County will be responsible for signage.

### **Cutting Requirements:**

Aspen Harvest Areas: (17 acres) Cut all trees one inch in diameter and larger. **Do not** cut boundary trees or conifers.

### **Special Conditions:**

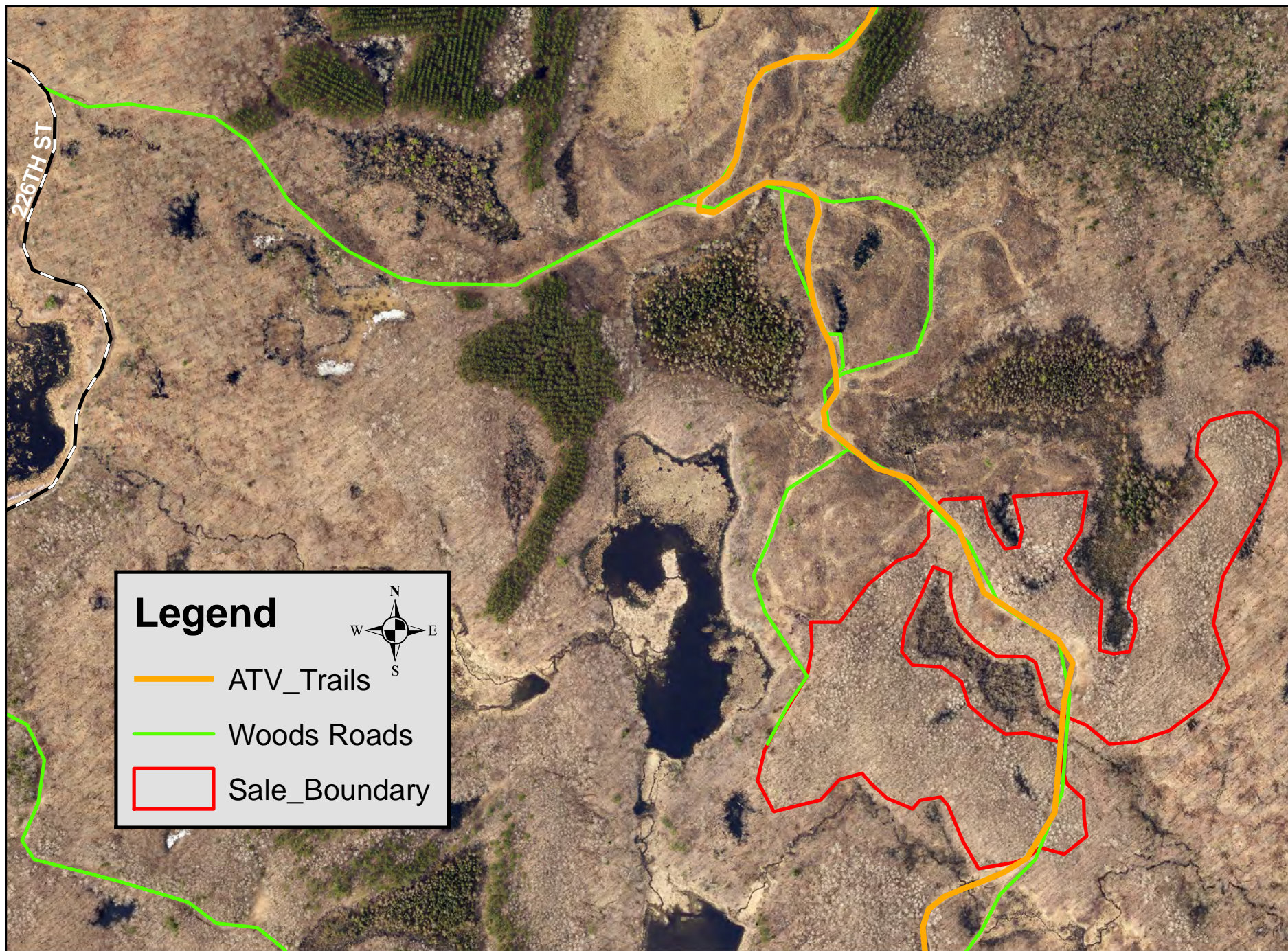
- The contract length is 2 years.
- No harvesting activity will be allowed if rutting occurs. There may be small pockets of wetlands/low areas that can be avoided with caution.
- Atv trail will remain open during operation
- *Leave all snags (dead trees) unless they present a safety hazard. Use caution to limit the disturbance of Course Woody Debris (CWD) on the forest floor. (ie) down logs greater than 12 inches in diameter.*
- All cordwood shall be utilized to a 4" top diameter.
- All slash must lie within two feet of the ground.
- All logging debris must remain within the sale boundaries and kept from wetlands and trails.
- All landing locations must be approved by the county.

**Map Located on the Back**



# Tract 17-23 Muscle Wood

Approximatly 17 acres Aspen Coppice



Map Not To Scale