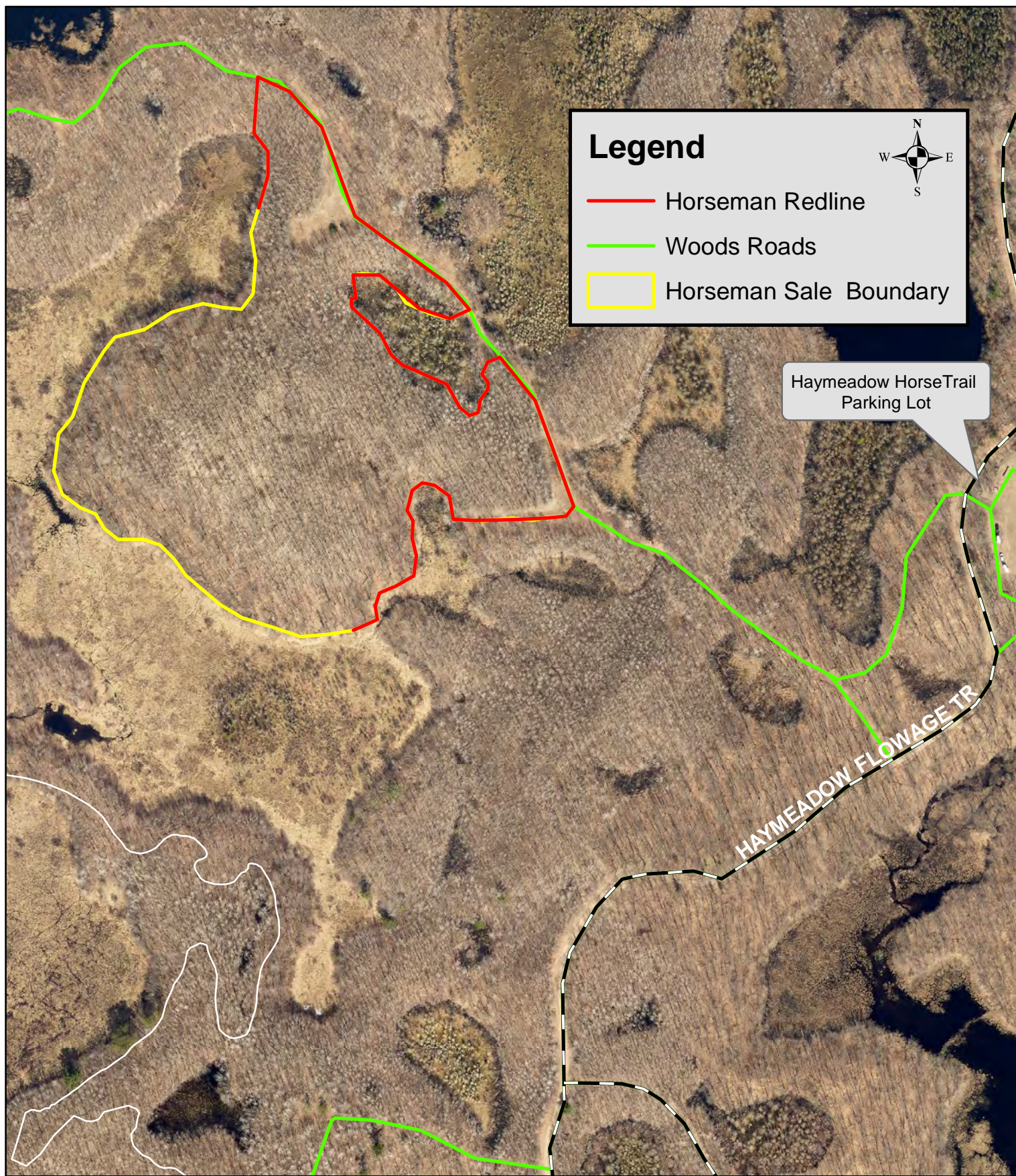


Tract 2-24 Horseman

Approximatly 14 acres aspen coppice



Map Not To Scale

CHIPPEWA COUNTY TIMBER SALE TRACT 2-24

Horseman

(approximately 14 acres)

Located in T31N R8W Section 11, Town of Cleveland

The table below contains an estimate of the amount of each species/product. There is no minimum bid for each species; however **the total minimum bid that is acceptable for Tract 2-24 is \$ 23,775.00.**

Species	Amount	
	Tons	MBF
Aspen cordwood	1030	
Mixed Hdwd cordwood	180	
Oak Logs		7

Sale Area Description:

This sale will be a clear-cut to coppice the aspen in the stand. The boundaries of this sale are marked with red paint line and no paint along the wetland border. Trees can be cut to the edge of the wetland but No equipment operation is allowed within 15 ft of the wetland. The sale is accessed on an existing woods road from the Haymeadow Flowage trail.

Cutting Requirements:

Aspen Harvest Areas: (14 acres) Cut all trees one inch in diameter and larger. **Do not** cut boundary trees or conifers.

Special Conditions:

- The contract length is 2 years.
- No harvesting activity will be allowed if rutting occurs.
- Horse trail will remain open during operation
- *Leave all snags (dead trees) unless they present a safety hazard. Use caution to limit the disturbance of Course Woody Debris (CWD) on the forest floor. (ie) down logs greater than 12 inches in diameter.*
- All hardwood logs, 10" or larger on the small end will be charged at the appropriate saw log stumpage rate.
- All cordwood shall be utilized to a 4" top diameter.
- All slash must lie within two feet of the ground.
- All logging debris must remain within the sale boundaries and kept from wetlands and trails.
- All landing locations must be approved by the county.

Map Located on the Back