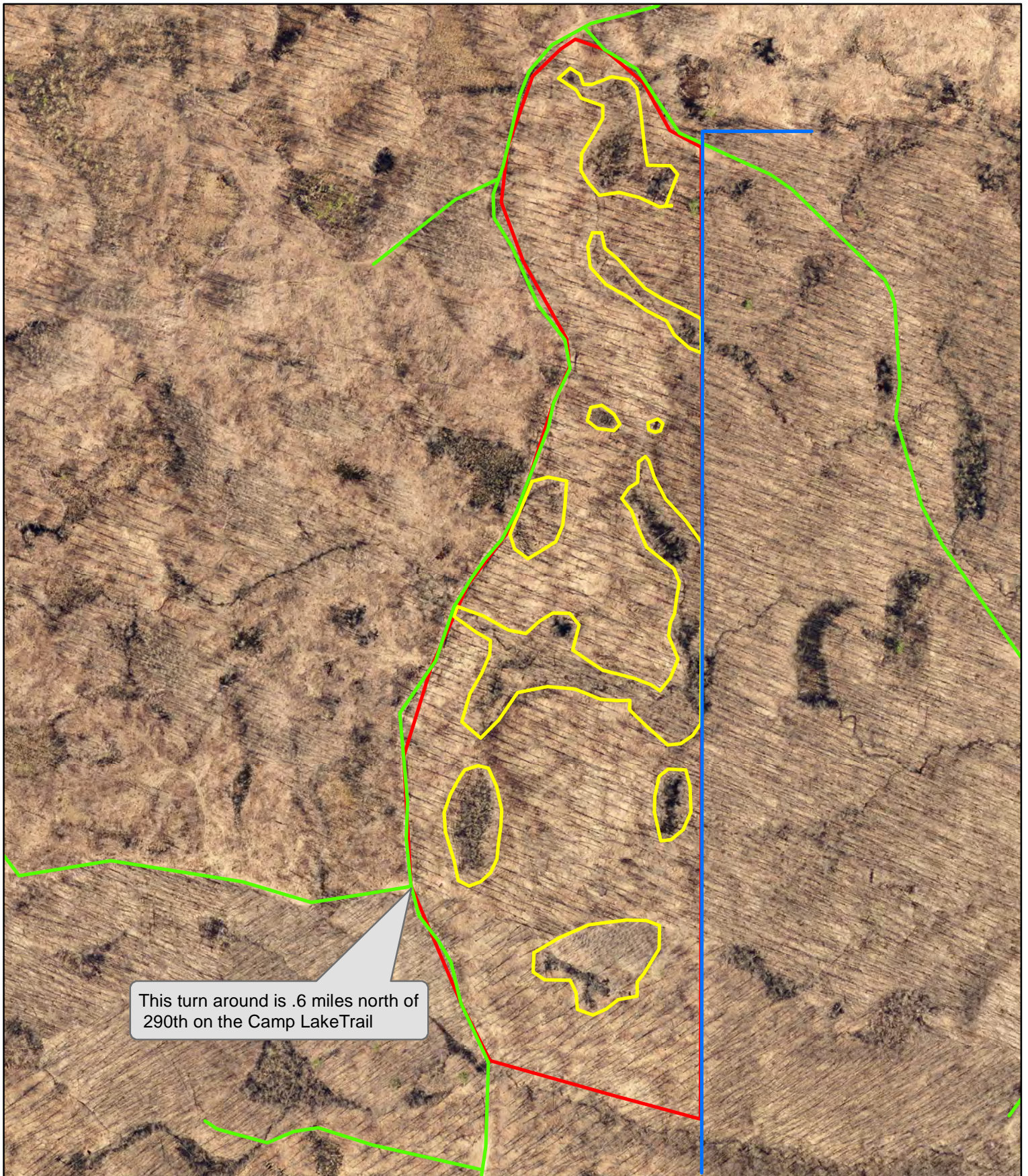


# Tract 5-24 Whale Oak

Approximatly 33 acres Oak Overstory Removal



This turn around is .6 miles north of 290th on the Camp Lake Trail

Map Not To Scale

## CHIPPEWA COUNTY TIMBER SALE TRACT 5-24

### **Whale Overstory Removal**

Located in T32N R8W Section 11, Town of Sampson

Total Sale Area: (approximately 33 acres)

The table below contains an estimate of the amount of each species/product. There is no minimum bid for each species; however **the total minimum bid that is acceptable for Tract 5-24 is \$ 66,975.00.**

Species	Amount	
	tons	MBF
Oak cordwood *	480	
Red Oak Logs		195
Mixed Hardwood logs		6

### **Sale Area Description:**

The boundaries of this sale are marked with red, yellow and blue paint lines. This sale is an oak shelterwood overstory removal. This sale will release existing oak regeneration. The eastern border of this sale is marked with blue paint to represent the private property boundary. The sale is accessed from the Camp Lake trail.

### **Cutting Requirements:**

Overstory removal area: (33 acres) Cut all merchantable trees  $\geq 5"$  DBH, except  $\geq 10"$  sugar maple and aspen pockets that were left in the previous harvest. Do not cut sale boundary trees (red, yellow or blue paint)

***Do not cut or damage any advanced oak regeneration.***

### **Special Conditions:**

- No harvesting activity will be allowed if rutting occurs.
- Oak Wilt and NHI Restrictions apply: No harvesting is allowed between April 1st and August 10th.
- No equipment operation is allowed within wetland areas delineated by yellow paint.
- All logging debris must remain within the sale boundaries and kept from wetlands, lakes and trails.
- All landing locations must be approved. All merchantable timber that is removed must be utilized and accounted for through mill slips or log scales.
- *Leave all snags (dead trees) unless they present a safety hazard. Use caution to limit the disturbance of Course Woody Debris (CWD) on the forest floor.* (ie) down logs greater than 12 inches in diameter.
- All cordwood shall be utilized to a 4" top diameter.
- All hardwood logs, (except aspen) 10" or larger on the small end will be charged at the appropriate saw log stumpage rate.
- The contract length is approximately two years.

**Map is Located on Back**