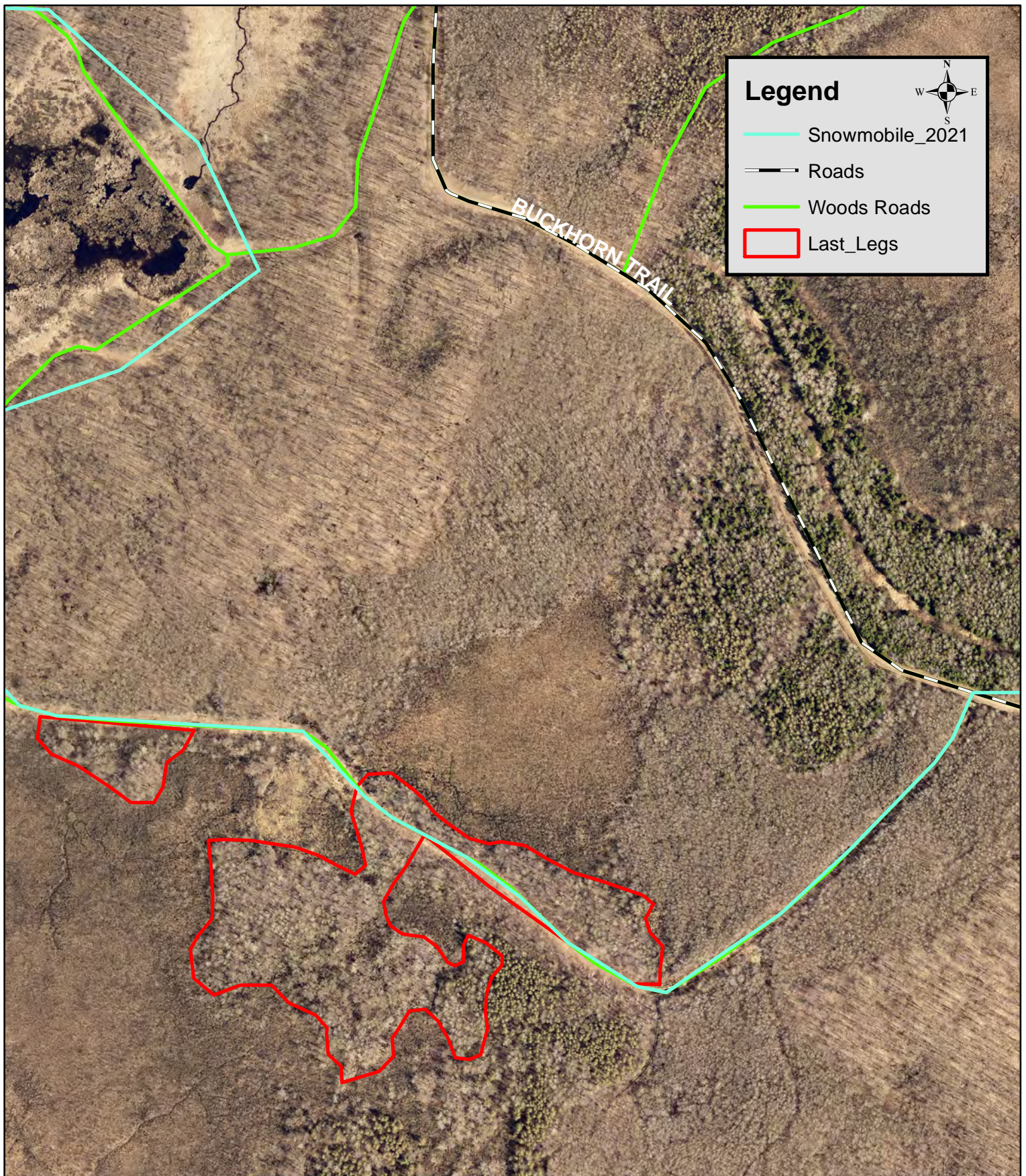


Tract 11-24 Last Legs

10 Acre Aspen Coppice



Map Not To Scale

CHIPPEWA COUNTY TIMBER SALE TRACT 11-24

Last Legs

(approximately 10 acres)

Located in T32N R5W Section 31 and 32, Town of Birch Creek

The table below contains an estimate of the amount of each species/product. There is no minimum bid for each species; however **the total minimum bid that is acceptable for Tract 11-24 is \$ 8,275.00.**

Species	Amount	
	Tons	MBF
Aspen cordwood	240	
Mixed Hdwd cordwood	175	
Mixed Logs Oak, Maple, Pine		13

Sale Area Description:

This sale will be a clear-cut to coppice the aspen in the stand. The boundaries of this sale are marked with red paint line. The sale is accessed from the Buckhorn trail and snowmobile trail. Due to wet ground conditions, Frozen ground will be required to harvest the sale.

Cutting Requirements:

Aspen Harvest Areas: (10 acres) Cut all trees one inch in diameter and larger. **Do not** cut boundary trees (red paint), conifers and tamarack.

Special Conditions:

- Harvest activity is permitted only when frozen ground conditions exist.
- The contract length is 2 years.
- No harvesting activity will be allowed if rutting occurs.
- Snowmobile trail will remain open during operation
- *Leave all snags (dead trees) unless they present a safety hazard. Use caution to limit the disturbance of Course Woody Debris (CWD) on the forest floor. (ie) down logs greater than 12 inches in diameter.*
- All hardwood logs, 10" or larger on the small end will be charged at the appropriate saw log stumpage rate.
- All cordwood shall be utilized to a 4" top diameter.
- All slash must lie within two feet of the ground.
- All logging debris must remain within the sale boundaries and kept from wetlands and trails.
- All landing locations must be approved by the county.

Map Located on the Back