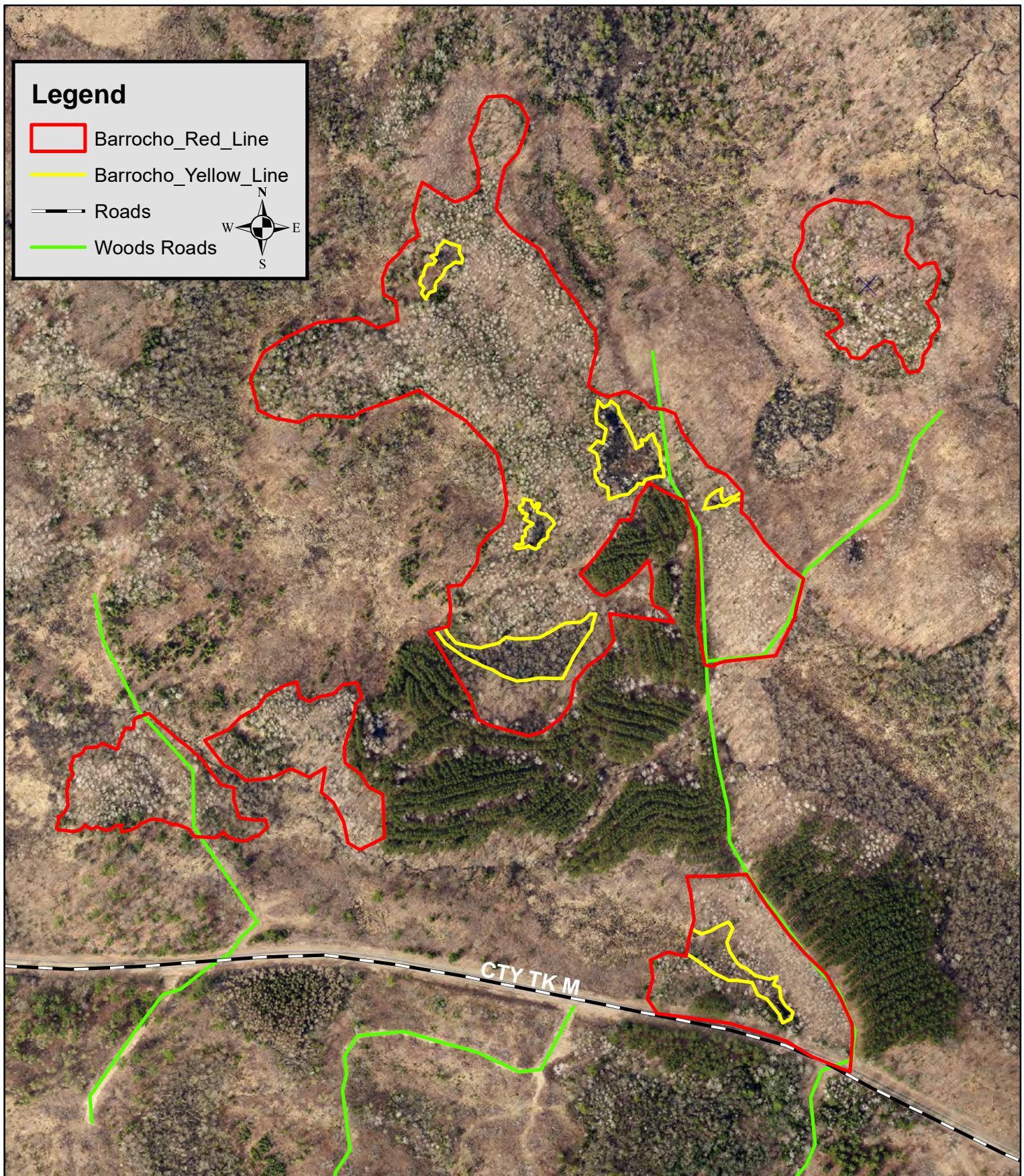


# Tract 12-24 El Borracho

Approximatly 32 acre Aspen Coppice



Map Not To Scale



## CHIPPEWA COUNTY TIMBER SALE TRACT 12-24

### El Borracho

(approximately 32 acres)

Located in T32N R7W Section 20, Town of Birch Creek

The table below contains an estimate of the amount of each species/product. There is no minimum bid for each species; however **the total minimum bid that is acceptable for Tract 12-23 is \$ 33,575.00.**

Species	Amount	
	Tons	MBF
Aspen cordwood	1080	
Mixed Hdwd cordwood	795	
Mixed Hdwd sawlogs		40

### Sale Area Description:

This sale will be a clear-cut to coppice the aspen in the stand. The boundaries of this sale are marked with red paint line. There are also wetland exclusion areas marked with yellow paint. No equipment is allowed to operate in these areas. A couple white oak where marked with green paint to be left uncut for wildlife. There is 2 hemlock and 1 red pine marked with orange paint that can be cut if needed to access the sale area along Hwy M. The sale is accessed on existing woods roads from Hwy M.

### Cutting Requirements:

Aspen Harvest Areas: (32 acres) Cut all trees one inch in diameter and larger. **Do not** cut sale boundary trees, green marked trees or conifers except those marked with orange paint.

### Special Conditions:

- The contract length is 2 years.
- No harvesting activity will be allowed if rutting occurs.
- *Leave all snags (dead trees) unless they present a safety hazard. Use caution to limit the disturbance of Course Woody Debris (CWD) on the forest floor. (ie) down logs greater than 12 inches in diameter.*
- All hardwood logs, 10" or larger on the small end will be charged at the appropriate saw log stumpage rate.
- All cordwood shall be utilized to a 4" top diameter.
- All slash must lie within two feet of the ground.
- All logging debris must remain within the sale boundaries and kept from wetlands and trails.
- All landing locations must be approved by the county.

**Map Located on the Back**