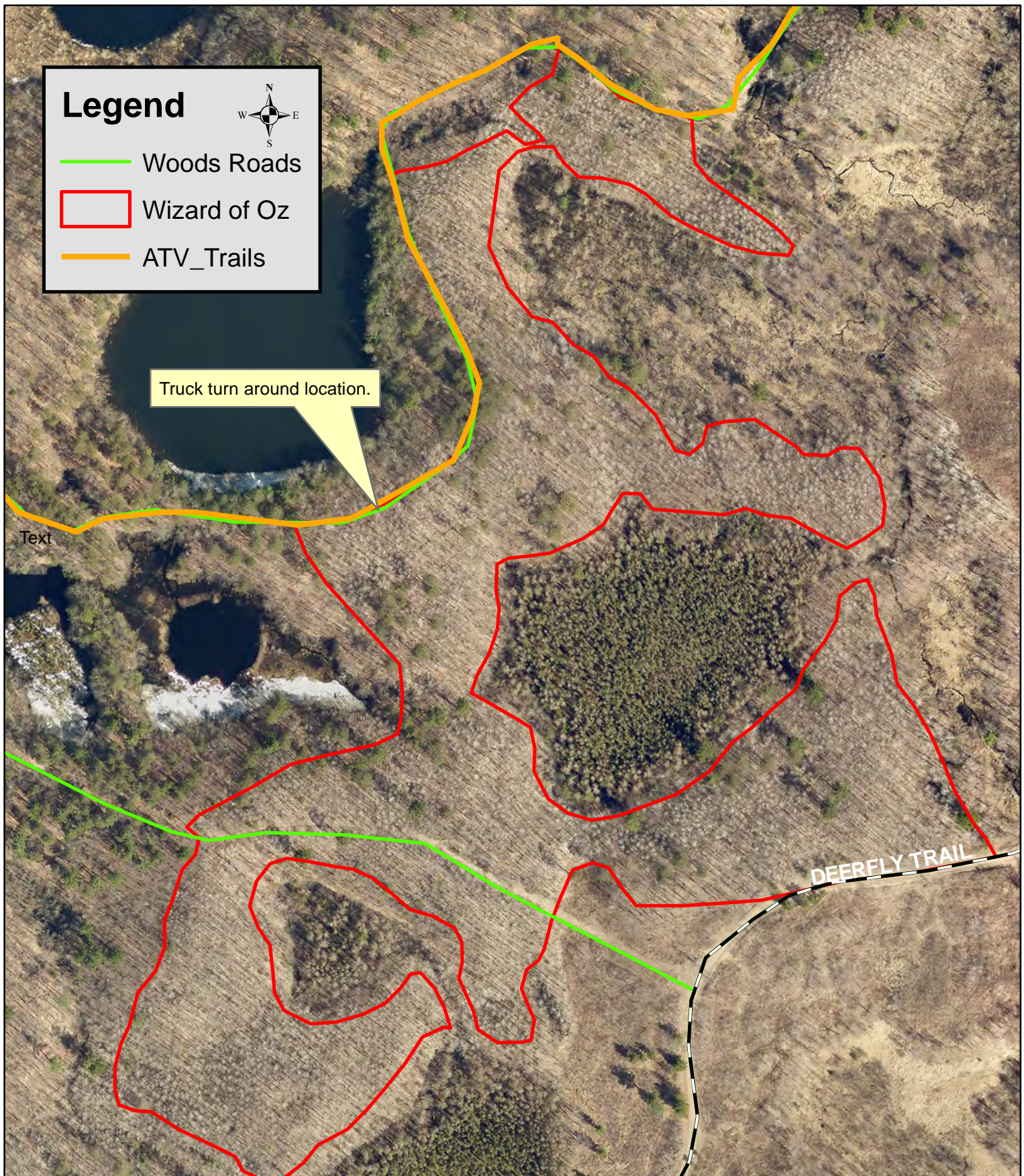


# Tract 13-24 Wizard of Oz

24 acre Aspen Coppice



Map Not To Scale



## CHIPPEWA COUNTY TIMBER SALE TRACT 13-24

### Wizard of Oz

(approximately 24 acres)

Located in T32N R8W Section 25, Town of Birch Creek

The table below contains an estimate of the amount of each species/product. There is no minimum bid for each species; however **the total minimum bid that is acceptable for Tract 13-24 is \$ 50,000.00.**

Species	Amount	
	Tons	MBF
Aspen cordwood	2350	
Mixed Hardwood cordwood	320	
Mixed Hardwood		7

MX Hardwood includes all pine harvested.

### Sale Area Description:

This sale will be a clear-cut to coppice the aspen in the stand. The boundaries of this sale are marked with red paint. Oak and conifers will be left to encourage longer lived species in the stand. The sale is accessed from the deerfly trail and ATV trail. There is a truck turn around pointed out on the map which may be built if needed but must remain as small as possible and water from the area must be directed to the south away from the trail. Trees marked in orange along the ATV trail are to be cut and utilized.

### Cutting Requirements:

Aspen Harvest Areas: (24 acres) Cut all trees one inch in diameter and larger. **Do not** cut boundary trees, oak or conifers unless marked with orange.

### Special Conditions:

- The contract length is 2 years.
- No harvesting activity will be allowed if rutting occurs.
- Atv trail will remain open during operations
- *Leave all snags (dead trees) unless they present a safety hazard. Use caution to limit the disturbance of Course Woody Debris (CWD) on the forest floor. (ie) down logs greater than 12 inches in diameter.*
- All hardwood logs, 10" or larger on the small end will be charged at the appropriate saw log stumpage rate.
- All cordwood shall be utilized to a 4" top diameter.
- All slash must lie within two feet of the ground.
- All logging debris must remain within the sale boundaries and kept from wetlands and trails.
- All landing locations must be approved by the county.

**Map Located on the Back**