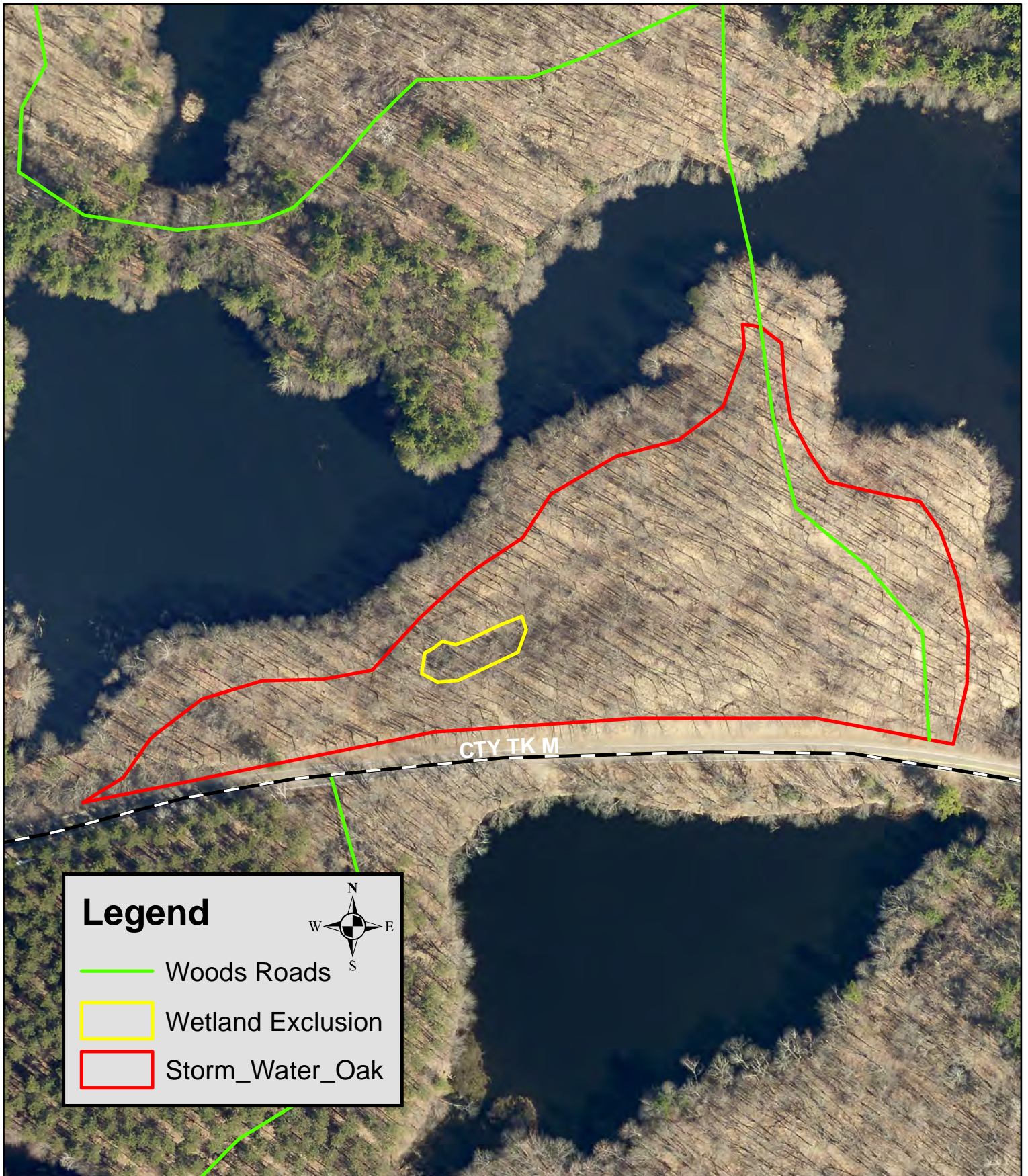


Tract 8-24 Storm Water Oak

5 acre clear-cut



Map Not To Scale

CHIPPEWA COUNTY TIMBER SALE TRACT 8-24

Storm Water Oak

Located in T32N R8W Sections 29, Town of Sampson

Total Sale Area: (approximately 5 acres)

The table below contains an estimate of the amount of each species/product. There is no minimum bid for each species; however **the total minimum bid that is acceptable for Tract 8-24 is \$ 7,205.00.**

Species	Amount	
	tons	MBF
Oak cordwood	150	
Red Oak Logs		15
Mixed Hardwood cordwood	90	
Mixed Hardwood logs		4

Sale Area Description:

The boundaries of this sale are marked with red paint lines. This sale is an oak clear-cut. This sale will release existing oak regeneration that regenerated from straight blade scarification in 2023. The sale is within the aesthetic corridor on the northside of Hwy M. There are leave trees marked with green paint along the road and 50-100 ft from the lake edge to maintain a 60 Sq Ft basal area RMZ.

Cutting Requirements:

Clear-cut area: (5 acres) Cut all merchantable trees $\leq 2''$ DBH, Do not cut green marked leave trees, or sale boundary trees (red, yellow paint)

Do not cut or damage any conifers or advanced oak regeneration.

Special Conditions:

- No harvesting activity will be allowed if rutting occurs.
- No equipment operation is allowed within wetland areas delineated by yellow paint.
- All logging debris must remain within the sale boundaries and kept from wetlands, lakes and roads.
- All landing locations must be approved. All merchantable timber that is removed must be utilized and accounted for through mill slips or log scales.
- *Leave all snags (dead trees) unless they present a safety hazard. Use caution to limit the disturbance of Course Woody Debris (CWD) on the forest floor. (ie) down logs greater than 12 inches in diameter.*
- All cordwood shall be utilized to a 4" top diameter.
- All hardwood logs, (except aspen) 10" or larger on the small end will be charged at the appropriate saw log stumpage rate.
- The contract length is approximately two years.

Map is Located on Back