

WHAT IS SUNRISE VILLAGE



Sunrise Village is an apartment complex available for low to moderate-income households age 62 or older and persons with disabilities. The "Village" consists of two apartment buildings. Each building contains six individual apartments with private entrances.

One of the buildings also houses on-site laundry facilities and a community room.

To qualify, applicants must have an annual income of no more than:

No. In Household	Max. Income Limit
1	\$57,800
2	\$66,050



MORE INFORMATION

If you would like more information on Sunrise Village or would like an application please contact:

CHIPPEWA COUNTY HOUSING AUTHORITY
711 N. BRIDGE STREET ROOM 14
CHIPPEWA FALLS, WI 54729
PHONE: 715.726.7933



EQUAL HOUSING
OPPORTUNITY

Sunrise Village Apartments

New Auburn, WI



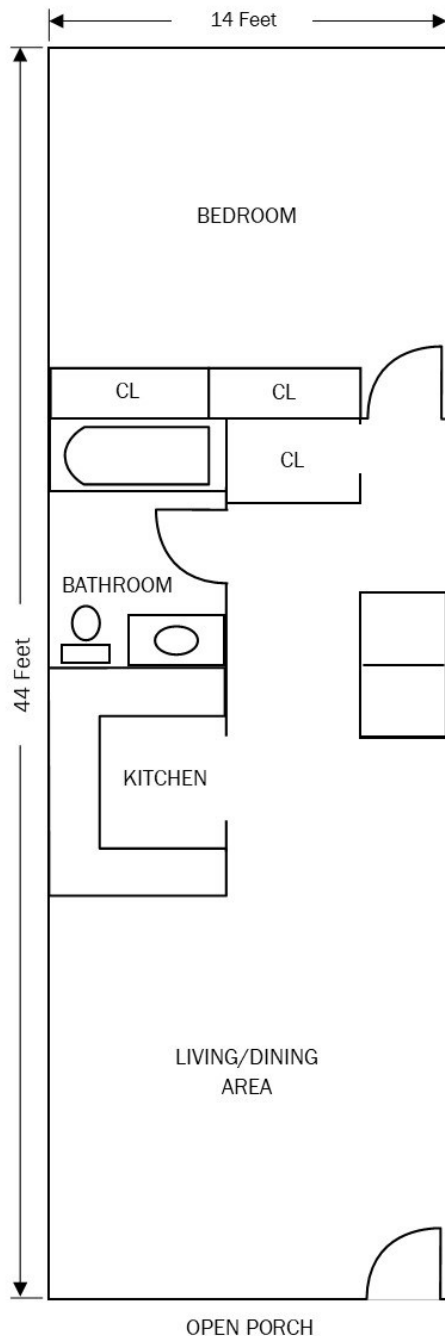
**CC
HA** | CHIPPEWA
COUNTY
HOUSING
AUTHORITY

711 N Bridge St. Rm 14
Chippewa Falls, WI 54729

Phone: 715.726.7933 | Fax: 715.726.7936
Email: housingauthority@chippewacountywi.gov

www.chippewacountywi.gov/community/housing-authority

APARTMENT LAYOUT



HAPPINESS IS

- Spacious apartments
- Lots of closet space
- On-site laundry facilities at reduced costs
- Private entrances
- Appliances included
- Community room
- Off street parking
- All utilities are included in the rent
- Lawn and snow care provided
- Small pets allowed (restrictions)
- Affordable!



RENT CALCULATION

The rent at Sunrise Village is based on 30% of your annual gross income. A certain percentage of your qualified medical expenses can be deducted from your income, which can make the rent you pay lower. The actual amount of rent you will pay will be determined after your application has been received and income has been calculated.

COMMUNITY ROOM



Interior - Community Room

The Community room is available to tenants anytime.

Tenants may reserve the room for special occasions or group gatherings.

It's a gathering place at mail delivery! The laundry facilities are just down the short hallway.

CC **CHIPPEWA**
HA **COUNTY**
HOUSING
AUTHORITY

711 N Bridge St. Rm 14
Chippewa Falls, WI 54729

Phone: 715-726-7933

Fax: 715-726-7936

Email: housingauthority@chippewacountywi.gov

www.chippewacountywi.gov/community/housing-authority