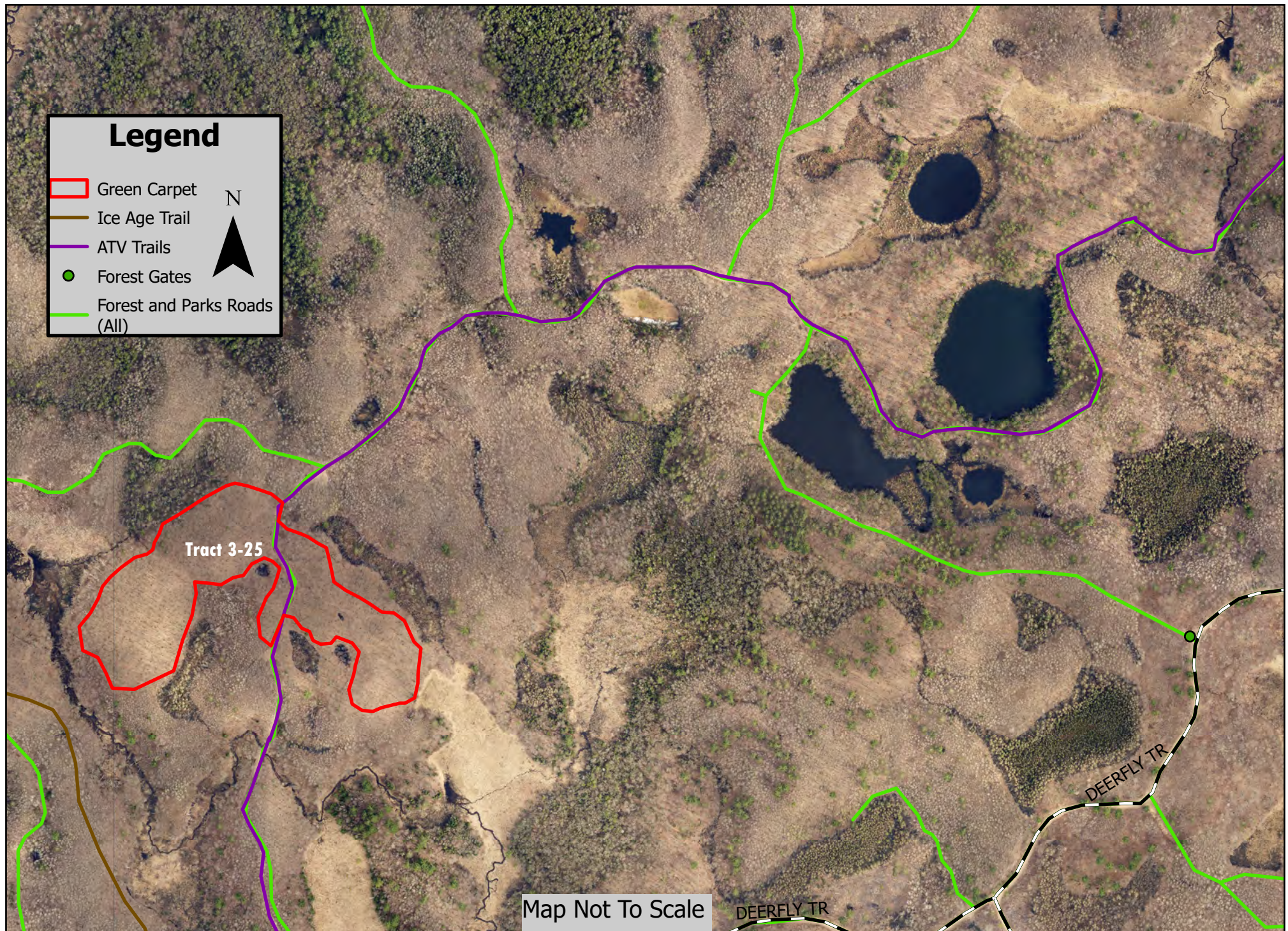


Tract 3-25 Green Carpet Approximately 14 acres Overstory Removal



CHIPPEWA COUNTY TIMBER SALE TRACT 3-25

Green Carpet Overstory Removal

Total Sale Area: (approximately 14 acres)

Located in Sec. 25 T32N R8W Town of Birch Creek and Sec. 26 T32N R8W Town of Sampson

The table below contains an estimate of the amount of each species/product. There is no minimum bid for each species; however **the total minimum bid that is acceptable for Tract 3-25 is \$ 13,740.00.**

Species	Amount	
	tons	MBF
Oak cordwood	228	
Red Oak Logs*		36

*Contains 2 mbf red maple

Sale Area Description:

The boundaries of this sale are marked with red paint lines. This sale is an oak shelterwood overstory removal. This sale will release existing oak regeneration. The boundaries of this sale are marked with red paint lines. This sale is accessed along the ATV trail near the blue painted rock.

Cutting Requirements:

Overstory removal area: (14 acres) Cut all trees $\geq 5"$ DBH. Do not cut sale boundary trees (red paint)

Do not cut or damage any advanced oak regeneration. $\leq 5"$

Special Conditions:

- No harvesting activity will be allowed if rutting occurs.
- Oak Wilt and NHI Restrictions apply: No harvesting is allowed between April 1st and July 31st.
- No equipment operation is allowed within wetland areas delineated by yellow paint.
- All logging debris must remain within the sale boundaries and kept from wetlands, lakes and trails.
- All landing locations must be approved. All merchantable timber that is removed must be utilized and accounted for through mill slips or log scales.
- *Leave all snags (dead trees) unless they present a safety hazard. Use caution to limit the disturbance of Course Woody Debris* down logs greater than 12 inches in diameter on the forest floor.
- All cordwood shall be utilized to a 4" top diameter.
- All hardwood logs, (except aspen) 10" or larger on the small end will be charged at the appropriate saw log stumpage rate.
- The contract length is approximately two years.

Map is Located on Back