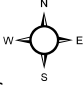


## Tract 6-25 Box Blind

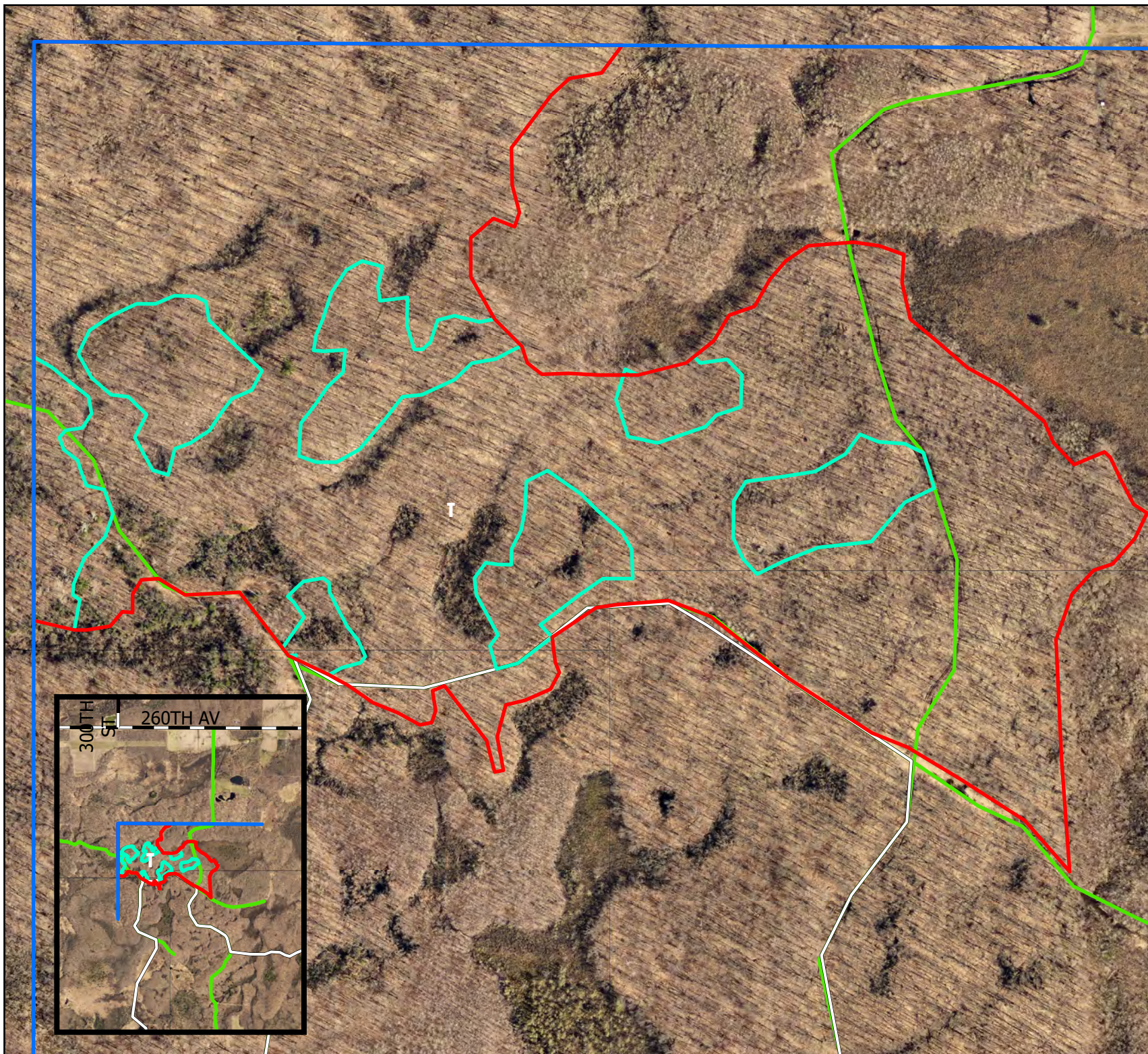
58 acres single  
tree selection

13 acres patch  
clearcut.

### Legend

- Property\_Lines
  - Box Blind
  - Patch Clear Cuts
  - Forest and Parks Roads (All)
- 

Not to Scale





## CHIPPEWA COUNTY TIMBER SALE TRACT 6-25

### Box Blind

Located in Sec. 36 T32N R6W, Town of Lake Holcombe

Total Sale Area: (approximately 71 acres)

The table below contains an estimate of the amount of each species/product. There is no minimum bid for each species; however **the total minimum bid that is acceptable for Tract 6-25 is \$ 40,150.00.**

Species	Amount	
	tons	MBF
Mixed Hardwood cordwood (includes oak)	1940	
Oak Logs		39
Mixed Hardwood Logs		84

MX HW is 75% Red Maple

### Sale Area Description:

The boundaries of this sale are marked with red and blue paint lines. Patch clear cut boundaries are marked with green paint and indicated on the map. This sale is a patch selection harvest with thinning in between the patches. Patches are focused on areas with existing oak regeneration or areas of multi stem red maple. The thinning areas will promote the shift towards an all aged stand by releasing desirable northern hardwood species. The snowmobile trail uses the southern boundary of this sale and must remain open and passable during operations.

Access has been secured through the adjacent landowner's property to the north. The access must be used under frozen ground conditions only. The logging contractor is responsible for restoring access to the landowner's satisfaction.

### Cutting Requirements:

Selection Harvest: (58 acres) Cut all trees marked with orange paint, including non-commercial trees marked with orange paint. Do not cut sale boundary trees that are marked with red, green or blue paint.

Patch Selection Area: (13 acres) Cut all trees >1", **Do Not Cut** Oak under 12 inches or boundary trees marked with green, red or blue paint.

### Special Conditions:

- This sale must be harvested under **FROZEN GROUND CONDITIONS.**
- All logging debris must remain within the sale boundaries and kept from wetlands and trails.
- All landing locations must be approved. All merchantable timber that is removed along landings or skid trails must be utilized and accounted for through mill slips or log scales.
- Leave all snags (dead trees) unless they present a safety hazard. Use caution to limit the disturbance of Course Woody Debris down logs greater than 12 inches on the forest floor.
- All hardwood logs, (except aspen) 10" or larger on the small end will be charged at the appropriate saw log stumpage rate.
- All cordwood shall be utilized down to a 4" top diameter