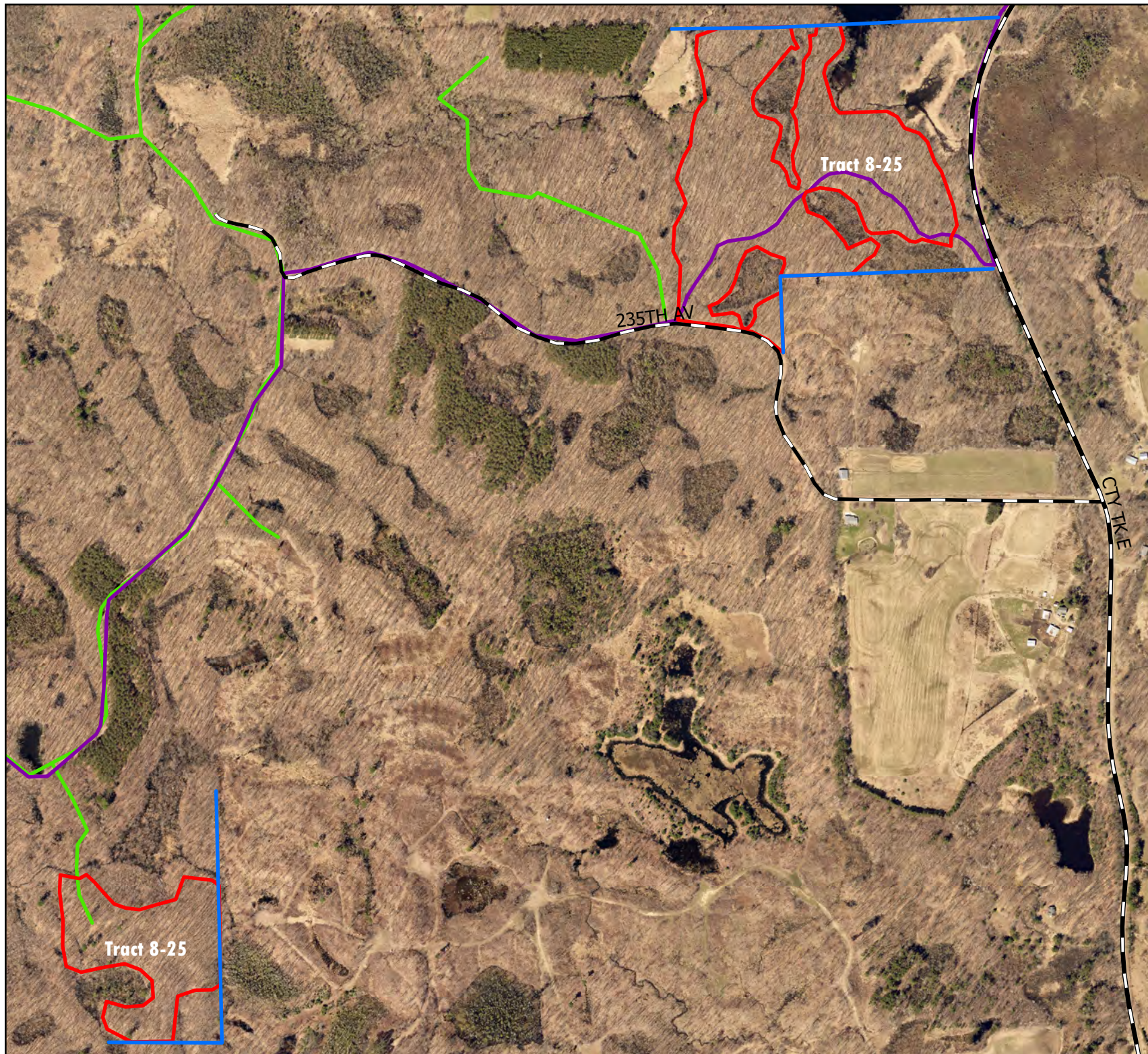


# Tract 8-25 Quadruple Porcupine

Approximately  
38 acres  
overstory  
removal

## Legend

- Property\_Lines
- Quadruple PP
- ATV Trails
- Forest and Parks Roads (All)



Map Not To Scale



## CHIPPEWA COUNTY TIMBER SALE TRACT 8-25

### **Quadruple Porcupine Overstory Removal**

Total Sale Area: (approximately 38 acres)

Located in T31N R8W Section 12 and T31N R7W Section 7, Town of Birch Creek

The table below contains an estimate of the amount of each species/product. There is no minimum bid for each species; however **the total minimum bid that is acceptable for Tract 8-25 is \$ 61,800.00.**

Species	Amount	
	tons	MBF
Oak cordwood	1160	
Red Oak Logs		135
White Oak Logs		25

### **Sale Area Description:**

The boundaries of this sale are marked with red and blue paint lines along private property. This sale is 38 acres of oak shelterwood overstory removal. This harvest system will be implemented to release existing oak regeneration and rotate the stand. The sale is accessed off of 235<sup>th</sup> ave and the ATV Trail.

### **Cutting Requirements:**

Overstory Removal area: (38 acres) Cut all trees 1" or greater. Do not cut sale boundary trees (red or blue paint) or trees that are marked with yellow paint to identify riparian management zones and wetlands.

### **Special Conditions:**

- No harvesting activity will be allowed if rutting occurs.
- Oak Wilt Restrictions apply: No harvesting is allowed between April 1 and July 15.
- Timber mats may be required. County timber mats are available for use, at no charge, on a first come first served basis.
- No equipment operation is allowed within wetland areas delineated by yellow paint.
- All logging debris must remain within the sale boundaries and kept from wetlands, lakes and trails.
- All landing locations must be approved. All merchantable timber that is removed along landings or skid trails must be utilized and accounted for through mill slips or log scales.
- *Leave all snags (dead trees) unless they present a safety hazard. Use caution to limit the disturbance of Course Woody Debris on the forest floor.*
- All cordwood shall be utilized to a 4" top diameter.
- All hardwood logs, (except aspen) 10" or larger on the small end will be charged at the appropriate saw log stumpage rate.
- The contract length is two years.

**Map is Located on Back**