

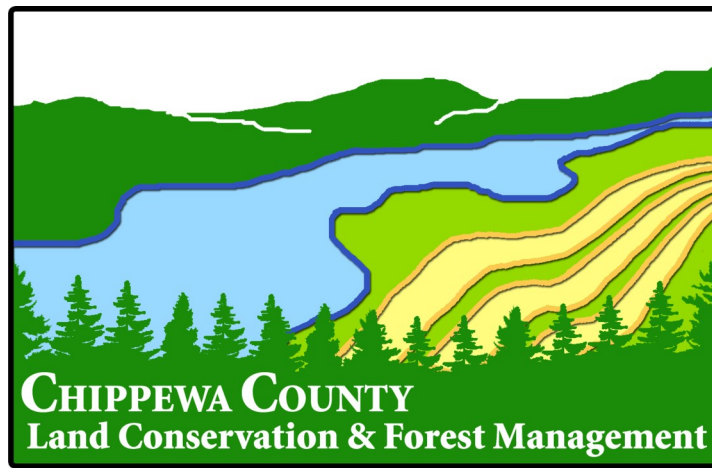
# Department of Land Conservation & Forest Management

---

## Annual Performance Report

2024

5/14/2025



# Table of Contents

2	LCFM History
2	Organizational Framework & Services
2	Department Staff
3 - 10	Land & Water Conservation Division Responsibilities & Accomplishments
11-14	Forest & Trails Division Responsibilities & Accomplishments
15-18	Recycling Division Responsibilities, Overview of Municipal Recycling Programs & Accomplishments
19-20	Fiscal Management & Budgeting
21 - 22	2024 Expenditures & Revenue
23 - 24	Moving Forward
25	List of Map Figures
26	LFCM Organizational Chart, Committee, and Staff

## LCFM History

The Land Conservation & Forest Management Committee was created in 2012 as an outcome of County Board Resolution #39-11.

The Land Conservation & Forest Management Committee meets monthly to provide policy oversight to programs that use, manage, and conserve the County's land and natural resource base.



## Organizational Framework & Services

The Dept. of Land Conservation & Forest Management is staffed by a team of professionals in environmental science, forestry, engineering, natural resource management, accounting, and public administration.

Three divisions have been established to provide the administrative structure needed to assure program focus and ongoing customer service.

Land & Water Conservation

Forestry & Trails

Recycling & Solid Waste

## Department Staff

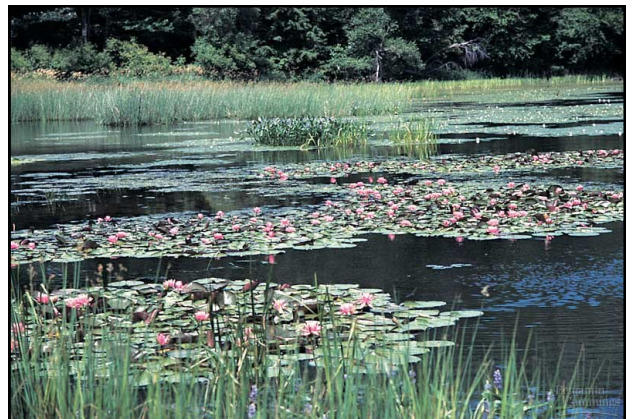


Staff (Left to Right):

Front Row: Joie Puig, Renee Yohnk, Emily Lee, Lynda Schweikert, Lisa Richardson, Jacob Larson, Ketty Clow

Back Row: Joan Schemenauer, Elise Theiler, Matt Hansen, Trenton Shutter

## Land & Water Conservation Division





## ***Land & Water Conservation Division Responsibilities***

The Land & Water Conservation Division:

- Administers local, state, and federal conservation programs under the statutory authorities of WI Stats., Chapters 91 and 92, WI Stats. 281, and associated and administrative codes (ATCP 50, ATCP 51, NR 216, NR 243, and NR 151).
- Administers county ordinances and state administrative rules to meet state mandates:
  - Animal Waste Management (NR 151, ATCP 50, ATCP 51).
  - Nonpoint Runoff and Pollution Control (NR 151, NR 216).
  - Non-Metallic Mine Reclamation (NR 135).
  - Stormwater Management (WI Stats., Chapters 59 and 236).
  - Chippewa County Farmland Preservation Plan
- Provides technical assistance and financial incentives to assist landowners manage and conserve land and water resources on a voluntary basis.
- Provides technical and engineering assistance to other county committees and local municipalities to address issues of environmental concern.
- Develops and actively maintains natural resource inventories, data sets, and maps to monitor the condition of the local environment.
- Administers voluntary water conservation initiatives, including targeted watershed and buffer programs to pursue local water management objectives.
- Administers the County Non-Metallic Mining Reclamation Ordinance and Program to assure non-metallic mines are properly operated and reclaimed.
- Administers the Chippewa County Groundwater Inventory Program to monitor groundwater quality and groundwater quantity.
- Administers the Chippewa County Stewardship Program to support the purchase of conservation lands by local municipalities and conservation nonprofit organizations.
- Administers the Chippewa County Stormwater Management—Construction Site Erosion Control and Post-Construction Ordinance with the Department of Planning & Zoning.





## Land & Water Conservation Division Accomplishments

In 2024, the Land & Water Division managed available resources to:

- Meet state program mandates.
- Maintain core regulatory services.
- Advance select voluntary conservation initiatives.

### Regulatory Mandates

- Maintained “Memorandum of Understanding” (MOU) and contractual obligations with DNR and DATCP to administer State agricultural runoff pollution control standards, and to respond to public complaints.
  - Received and responded to two (2) public complaints concerning agricultural runoff and animal waste discharges to surface or groundwater.
- Provided technical and regulatory services under the Chippewa County Animal Waste Storage Ordinance and State agricultural runoff and pollution control rules (WI Stats. NR 243, NR 151).
  - Received eight (8) AWO permits applications.
  - Issued six (6) permits to close structures.
  - Certified AWO projects (one (1) barnyard project installed and six (6) closure completed).
  - Performed soil investigations (two (2) proposed waste storage facilities).
  - Reviewed Conditional Use Permit Application for Livestock Siting (one (1) CAFO.)
  - Provided nutrient management plan services to 43,324 acres.
  - Assisted crop and livestock producers to meet and maintain compliance with State nonpoint source pollution control standards (NR151).



## Land & Water Conservation Division Accomplishments

- Administered and provided regulatory services under the Chippewa County Non-Metallic Mining Reclamation Ordinance for 78 sand and gravel mines permitted and five (5) industrial sand mines permitted, (**Map 3**).
  - Four (4) sand & gravel sites were reclaimed in 2024.
  - Conducted routine site inspections to assist mine operators meet State non-metallic mine reclamation standards (NR 135).
  - Reviewed reclamation plans and issued two (2) new reclamation permits.
  - Assured permit compliance through site specific enforcement actions.
  - Adjusted fee structure to cover program costs.



- Chippewa County LCFM has an intergovernmental agreement with four (4) municipalities to administer the urban stormwater management program and meet the requirements of federal/state stormwater discharge permit (WPDES Permit #WI-S050075-3).
  - Conducted seven (7) stormwater plan reviews, 82 construction site inspections, and 48 post construction site inspections.
  - Conducted annual post-construction stormwater facility inspections.
  - Conduct annual illicit discharge inspections for ditchlines and outfalls.
  - Participated in regional educational outreach activities through participation in the West Central Wisconsin "Rain to Rivers" Stormwater Forum.
  - Completed MS4 stormwater permit reporting by County and assisted municipalities in completing their own MS4 reporting.

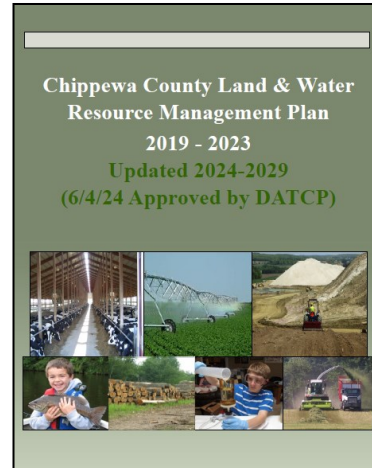




## Land & Water Conservation Division Accomplishments

### Conservation Initiatives

- Updated the Chippewa Co. Land & Water Resource Management Plan (2024-2029) and implemented activities in the plan.
- Presented at Chippewa County Conservation Field Days - Lake Wissota (10/1/24)/Brunet Island (9/25/24).
- Assisted the Chippewa Valley Producer Led Watershed Counsel with outreach and education.
  - Spring Meeting.
  - Corn/Cover Crop Inter-Seeding Field Day.
- Maintained core conservation services to enable rural land owners to voluntarily install water conservation practices through participation in the WI Conservation Reserve Enhancement Program (CREP), (**Map 1**).
- Continued administration of the Nitrogen Remediation Project through ARPA Plan and Funding Project, (**Map 2**).
  - Implemented third year cover crop program.
    - \*Ten (10) contracts.
    - \*1,000+ acres of cover crops.
- Installed Water Refill Stations in the Towns of Wheaton, Anson, Auburn, and Lafayette.
  - Distributed approximately 50 one (1) and two (2) gallon water jugs to residents in the above towns to use at the water refill stations.
- Administered SWRM Grant.
  - Contracted ten (10) contracts for cover crops totaling 1,564 acres.
  - Forty-six (46) tons of soil saved.



- Sponsored a conservation tree program.
  - 96 participants
  - 9,475 trees sold.



## ***Land & Water Conservation Division Accomplishments***

- Provided technical and administrative support to eligible farms that applied for Farmland Preservation Agreements within the established agricultural enterprise areas (AEA's), under the WI Working Lands Initiative.
  - Provided conservation services to assist 11 producers with Farmland Preservation Agreements to meet State nonpoint source pollution control standards (NR 151).
  - Administered annual reporting and certification procedures to meet State requirements.
- Assisted with UW Extension research project on nitrate optimization pilot project in Chippewa County, installing #144 lysimeters to collect nitrate leachate in corn fields.
- Entered into contract with Beaver Creek Reserve for assistance in lake management and monitoring in Chippewa County (AIS Prevention).
- Maintained and amended agreement with Lake Wissota Improvement & Protection Association to implement the Lake Wissota Stewardship Project through 12/31/2026.
  - Used staff and LTE's to administer the project & provide technical services.
  - Supported citizen volunteers to conduct lake and stream water quality monitoring.
  - Provided outreach at annual meeting.
  - Supported Buckhorn Removal Project at Brick Boat Landing.
  - Participated in LWIPA summer picnic.
  - Provided a display at Northern WI State Fair.
  - Farm Technology Days.
  - Established four (4) Fixed Point Stations around Lake Wissota.

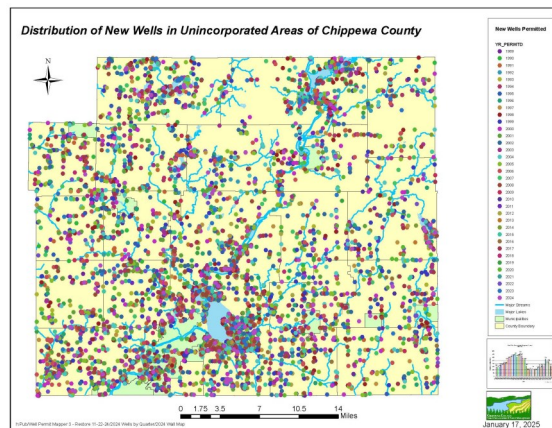


- Administered Chippewa County Stewardship Fund.
- Administered cooperative agreement with DATCP & DNR to administer the WI DNR Wildlife Damage Abatement and Claims Program as well as the Deer Donation Program (2024-2028).
- Administered the financial component of the Wildlife Damage and Claims Abatement Program (\$32,042.28 in 2024 claims).

## Land & Water Conservation Division Accomplishments

### Resource Studies and Monitoring

- Maintained well-defined set of natural resource inventories and data bases to monitor resource conditions as contributing components of the County GIS.
  - County-held conservation easements, (**Map 1**).
  - Agricultural operations meeting State non-point pollution control standards.
  - Well permit locations, well logs, and groundwater chemistry (Co. Groundwater Inventory).
  - Groundwater elevation monitoring sites (WellIntell).



- Monitored operational permits, contracts, and conservation easements to confirm compliance.
- With USGS, collected data from Drywood Creek to monitor the hydrologic impacts of land use changes & nonmetallic mine reclamation in the Yellow River Basin.
- Maintained and monitored two (2) weather stations in the rural landscape to assist in ag decision making & increase understanding of climate change & impact on local food production & land use mngt. Also monitored a third weather station at Kamp Kenwood to assist with educational activities at the camp.







Land & Water Conservation Division



## Forest & Trails Division





## ***Forest & Trails Division Responsibilities***

Chippewa County manages 34,738 acres of land enrolled in the County Forest system.

County Forest management pursues multiple objectives to balance the public's interests in forest production, environmental protection, and public recreation.



The Forest and Trails Division:

- Administers the County Forest program within statutory authority of Wis. Stats., Chapter 28 and associated administrative rules.
- Plans and maintains the County Forest road and trail network to support forestry practices and to provide opportunities for forest land access and recreational use.
- Manages a network of flowages, wildlife areas and natural areas for water conservation and wildlife habitat.
- Provides administrative and technical assistance to citizen volunteers and recreational user groups who operate and maintain motorized and non-motorized trail networks.



## ***Forest & Trails Division Accomplishments***

In 2024, the Forest & Trails Division allocated available resources to:

- Inform the Committee and work with WNDP to conduct a 63acre prescribed burn to promote Oak regeneration near Bradley Lake.
- Facilitate Committee consideration of land trades, sales, and purchases.
- Work with Corporation Counsel and the Zoning Director to sell property, resolve trespass, easement, and property line disputes in the County Forest and on Type B Tax Deed lands.



## County Forest Management

- Managed the 33,079 acres enrolled as regular County Forest and 1,659 acres of Special Use lands (listed below) as conservation and recreational assets (**Map 4**).

-Gilberts	-Pine Harbor
-Harold Walters Memorial Forest	-Round Lake
-Kemper's Woods	-Yellow River
-Otter Lake	



- Forest & Trails is also responsible for management of the Riverview Conservancy in Chippewa Falls and the Peterlik Wildlife Area near Jim Falls, which are not enrolled in the County Forest Program.

- Administered \$6,333 of County Forest Road Aids to maintain 18+ miles of Primary Forest Road.

## Timber Sales

- Prepared two (2) bid opening packages and contracted timber sales as follows:

15 new sale contracts      663 total acres      \$1,138,532.00 estimated future revenue

- Three (3) advertised sales received no bids and remain uncontracted (50 acres).

- Provided sale administration for 23 active timber sale contracts.

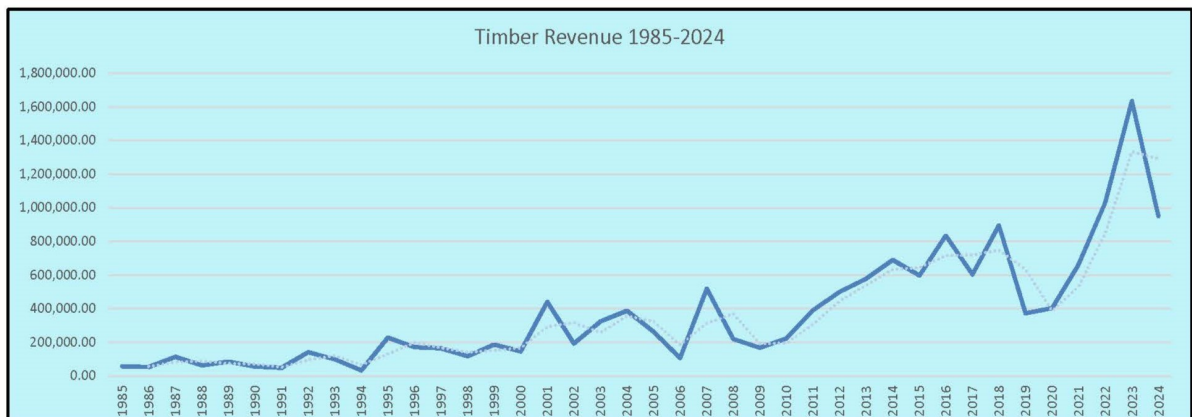
- \$950,218.02 stumpage revenue generated.

- Timber sale revenue accounted as follows:

County 88% Share	\$836,191.86
------------------	--------------

Town 12% share	\$114,026.16
----------------	--------------

-The County has no loans owed the State so the 20% repayments remains with the County.





### Management of Type B Tax Deeded Parcel Inventory

- Worked with Facilities & Parks and Planning & Zoning departments to rectify any issues hindering the land management and sales processes.
- Several Type B Tax Deed properties and the Peterlik Wildlife Area will be entered into the County Forest Program as Special Use lands when planned timber harvests are completed and access issues are resolved.
- Entered into an agreement with the University of Wisconsin—Madison to facilitate the installation of a weather station on the Peterlik Wildlife Area.



### Recreation

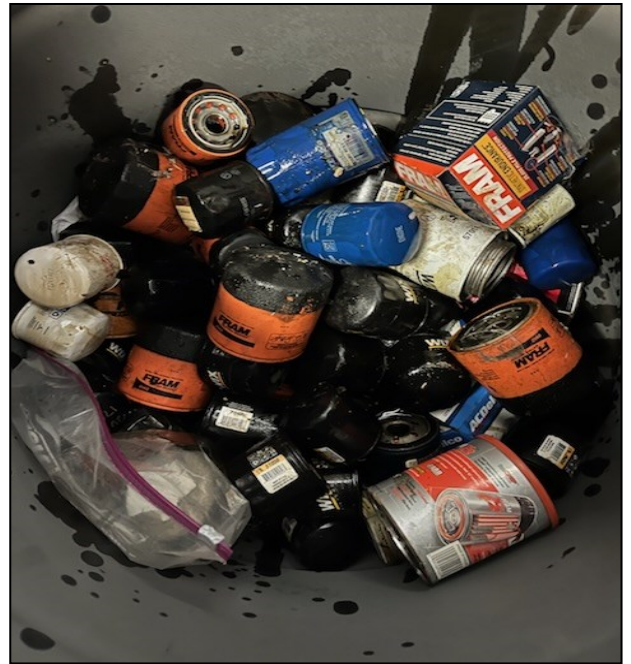
- Worked with recreational user groups to actively plan, manage, improve and maintain trail networks located within and outside of the County Forest (**Map 5**).
  - County Forest hiking, skiing, mountain bike, horseback and canoe trails.
  - County Forest ATV/UTV trails.
  - County Forest snowmobile trail system.
- Worked with West Central Wisconsin Regional Planning Commission to update the Chippewa County Comprehensive Outdoor Recreation Plan.
- Maintained administrative framework to manage citizen volunteers.
  - Processed two (2) new volunteer applications in 2024, trained and deployed as needed/available.
- Non-Motorized trails
  - Facilitated Special Event Permit process for the Deer Fly Chase Mountain Bike Race and the Chippewa 50K Ultramarathon Trail Race.
  - Administered the Old Abe State Trail Cooperative Agreement. The sale of 495 annual and 926 daily State Trail Passes generated \$11,673.50 for the County maintenance and \$5,101.50 (30%) of pass sales is passed on to the State.
- Motorized trails
  - Implemented frozen ground motorized access in Birch Creek and Ruby.
  - Administered \$18,480 grant for ATV/UTV trail maintenance.
  - Administered \$128,130 grant for snowmobile trail maintenance.
  - Administered \$2,042 grant for TROUTE maintenance.

### Wildlife

- Maintained infrastructure and managed flowage levels to provide improved habitat.
- Updated the Emergency Action Plan for Large Dams in the Chippewa County Forest.
- Mowed the seven (7) acre pollinator habitat planting at Otter Lake.
- Facilitated LCM Engineering staff's inspections required for relicensing on seven (7) large low-hazard wildlife flowages.



## Recycling Division



## *Recycling Division Responsibilities*



Wisconsin Stats., Chap. 287 encourages waste reduction through recycling. This law assigns responsibilities for recycling to local municipalities and provides grant assistance to support local recycling programs.

In response to this requirement, 28 of the 31 municipalities in Chippewa County have entered into an intergovernmental agreement. This agreement establishes the framework for the recycling program in Chippewa County.

Under the Recycling Responsibility Agreement, the duties of the County are to:

- Adopt a resolution pursuant to Wis. Stat. §287.09(1) designating the County as the “Responsible Unit” for Chippewa County.
- Distribute to the municipalities a proportionate share of a State recycling block grant to support individual recycling programs.
- In cooperation with local units of government, adopt and enforce ordinances (Chippewa County Responsible Unit Recycling Ordinance, Chapter 62) to assure compliance with the provisions of Wis. Stat. §287.
- Develop programs to insure eligibility and apply for grants in compliance with Wisconsin recycling laws.
- Develop and maintain a recycling education program to support recycling efforts throughout Chippewa County.

Under the Recycling Responsibility Agreement, the duties of the municipality are to:

- Individually (or in association with other local municipalities and/or private vendors), develop and maintain a recycling collection system that meets recycling requirements.
- Arrange transport of recyclables to processors and/or end markets.
- Pay the costs for materials delivered from their municipality for recycling through appropriations, grants, and other means implemented through local budgeting procedures.
- Maintain financial records for the recycling activities.





## Overview of Municipal Recycling Programs



All municipalities in Chippewa County have developed individual recycling collection programs. Under these programs, each municipality:

- Arranges for transport of recyclables to processors.
- Pays the costs for materials delivered from their municipality. These costs are, in turn, paid through tax levy appropriations, grants, and other fees implemented through local budget processes.

### Types of Municipal Recycling Programs

All municipalities have either developed a drop-off program at a local recycling center or have negotiated contracts with haulers to provide a curbside recycling program, (**Map 6**).

Under the drop-off option:

- The municipality establishes a drop-off collection site.
- Residents of the municipality haul their recyclables to the drop-off center on the designated days and hours.
- The municipality contracts with a licensed recycling hauler to pick up the recyclables, or the municipality transports the recyclables to a licensed recycling center.

Under the curbside recycling collection option:

- The municipality contracts with a recycling hauler to pick up recyclables at each residence.



## *Recycling Accomplishments*



In **2024**, the Recycling Division managed available resources to:

- Meet State program mandates.
- Maintain core regulatory services.
- Advance select initiatives to evaluate and upgrade recycling and solid waste management efforts.

### *State Mandates*

- Allocated available resources to pursue State mandates for recycling and solid waste management under Wis. Stats. 287.
- Provided financial incentives, educational support, and regulatory services to 28 municipalities that participate in the Chippewa County Responsible Unit (RU), as needed to meet State recycling mandates.
  - Continued distributing the State Recycling Block Grant to municipalities using a per capita formula.
  - Implemented a new “accelerated citation method” to improve efficiency in response to illicit dumping and clear violations of County recycling and litter ordinances.
- Administered the City of Chippewa Falls recycling program under an intergovernmental agreement and municipal service contract.

### *Recycling Initiatives*

- Secured short-term project grants and administered a series of County-wide recycling collection events to augment municipal collection programs (appliances, tires, hazardous waste, and electronic waste).
  - With Towns, developed and implemented Town roadside ditch spring clean-up initiative.
- Assisted the City of Chippewa Falls to monitor the contract for bi-weekly, cart-based single stream recycling service.





## ***Fiscal Management***

In meeting its fiscal responsibilities, the Department performs a wide-range of duties associated with:

- Budget preparation.
- Grant writing and management.
- Routine accounting and fiscal audits.
- Grant disbursement.

### **Budget Development**

The Department prepares an annual and long-term capital improvement budget request for each division following guidance established by the County Administrator.

In preparing its budgets, the Department uses levy funds to meet state mandates and to carry-out core functions.

These levy funds are augmented by revenue from:

- Permit fees (to offset the cost of regulatory services).
- Municipal and intergovernmental service contracts (to do work for others).
- Short and long-term grants from state and federal agencies.
- Corporate donations.
- Timber sales.

### **Selection and Use of Grants**

The Department aggressively pursues both public and private grants in order to pursue program objectives.

All grants are highly competitive and require a significant investment of resources to pursue (staff, \$, skill sets).

As a condition of receiving each grant, the County is obligated to:

- Assure fiscal accountability to the granting authority by:
  - Providing scheduled reports of project activity and product deliverables.
  - Participating in annual grant audits to assure grant conditions are met.
- In circumstances where grant funds are distributed to individual landowners, cooperating municipalities or community organizations, enter individual contracts or funding agreements with the parties receiving public funds.

Given these requirements, the Department selects and administers grants that:

- Align with an issue of concern and planned objective..
- Can be leveraged with other funds to provide a high “rate of return” .

## Overview of Grant Sources

The Department uses different types of grants to maintain public services and meet local needs:

- Short-term project grants (1-3 yr.) are used to address site specific management concerns:

-DNR	Small and large-scale pollution control grants.
-DNR	Forestry management/infrastructure grants.
-DNR	Recycling event collection grants.

- Longer term project grants (3-10 yr.) are used to advance broader management objectives on a multi-year landscape or watershed scale.

-DNR	Watershed Grant - Lake Wissota Stewardship Project.
-USDA/ DATCP	WI CREP stream/wetland buffer grant.

- Annual state “staffing block grants” are used to partially offset costs of the technical services.

-DATCP	Land & Water Conservation staffing grants.
-DNR	Forestry staffing grants.

- State and federal “pass through” grants and community aids are used to provide funding to local municipalities, user groups, and conservation organizations who work in collaboration with the Department to meet state objectives.

-DNR	Municipal recycling grants.
-DNR	Municipal forestry aid and severance payments.
-DNR	Recreational trails development and maintenance grants.

- Direct donations from private corporations and businesses are used to fund special projects of high importance and community value.

-Lake Wissota Stewardship Project.

- The Chippewa County Stewardship Funds is used to:

- Distribute matching grants to support efforts by municipalities and conservation organizations to purchase land and conservation easements for public use.
- Purchase County Forest land.



## 2024 Revenues & Expenditures

### Distribution of Revenues & Expenditures

With regards to revenues, approximately:

- 20% comes from the County levy.
- 25% comes from fees, grants, and donations generated to support land and water conservation programs.
- 15% comes from grants generated to support recycling programs.
- 40% comes from grants and timber sales to support forest and trails programs.

With regards to expenditures, approximately:

- 50% is applied to staff and contracted services.
- 5% is applied to operations.
- 20% is distributed as grants and aids to municipalities and user groups.
- 5% is distributed as grants to landowners.
- 10% is unexpended project grant revenue that is carried over to support multi-year projects.
- 10% is revenue historically returned to the general fund.

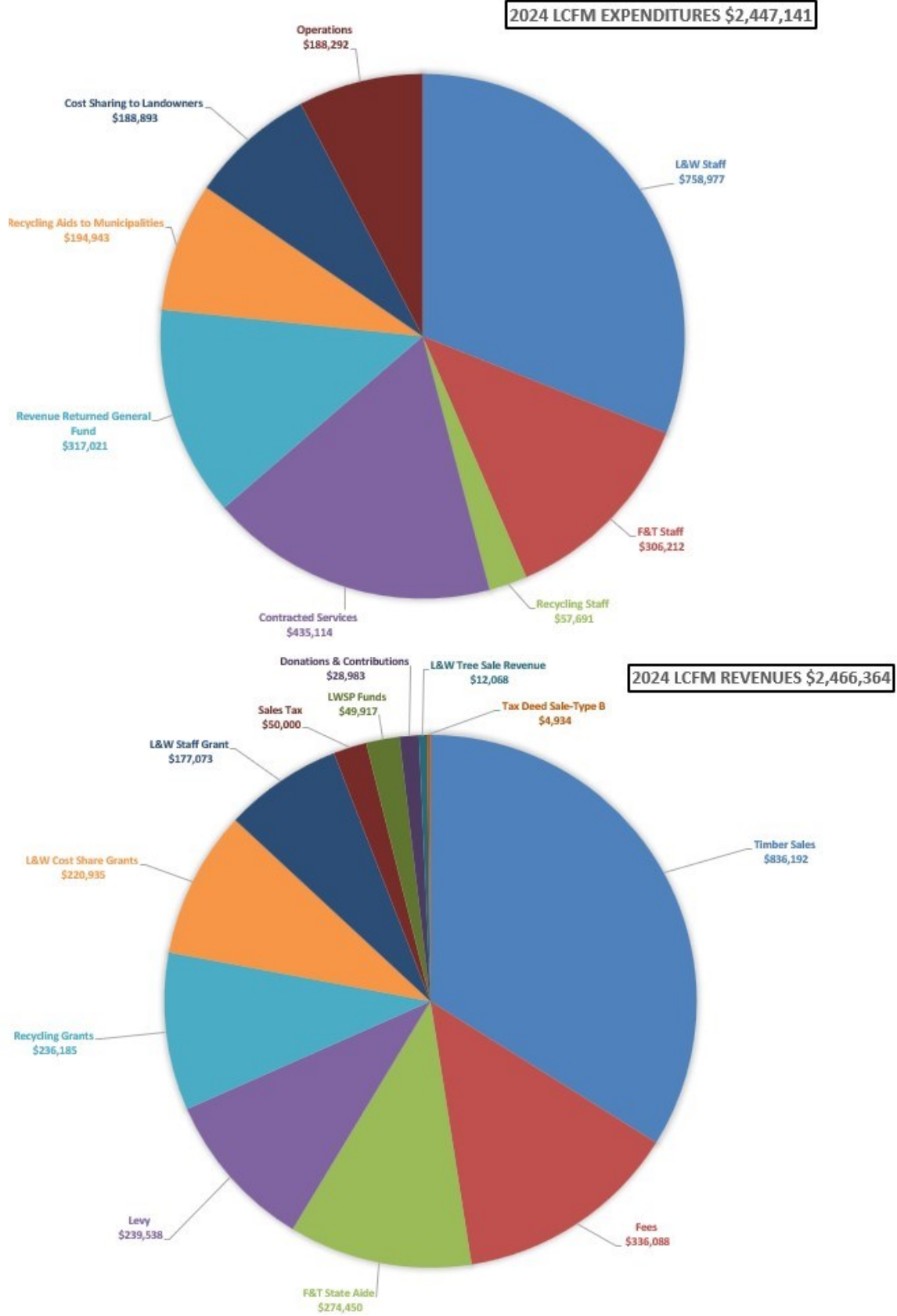
### Administrative Changes

To improve fiscal accountability, the LCFM works with the Dept. of Administration to:

- Evaluate all grants and revenue streams:
  - Selectively “close out” or extend short-term program grants.
  - Pursue new grant opportunities to support targeted initiatives.
- Evaluate and update all job descriptions, and participate in new Employee Engagement personnel management system.
- Recruit and train professional staff to fill vacancies, including the four (4) recurring LTE staff (Engineering Co-Op, Land Resource Technician, Land & Water Resource Technician, and F&T Tech 2) positions.



## 2024 Expenditures & Revenues



## 2024 Expenditures & Revenue



## ***Moving Forward***

### **Management Approach**

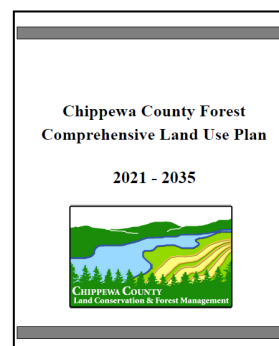
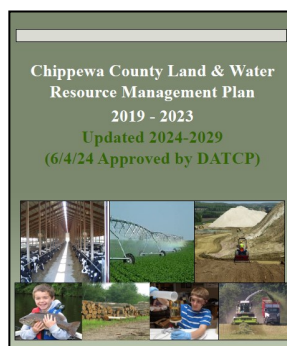
In providing public services, the Dept. of Land Conservation & Forest Management applies a business-based service delivery model using a team management approach.

This management approach is administered to:

- Address the fiscal challenges associated with the 2023-2025 biennial budget.
- Recognize the limits of available resources (staff, \$, skill sets).
- Further adjust programs and available resources (staff, \$, skill sets) as needed to advance the goals and objectives of the County Strategic Plan.
- Identify benchmark measures that will be used to evaluate and measure performance.

### **Guiding Principles**

- Support a team management environment.
- Focus on customer service.
- Evaluate past management practices and current administrative processes. Adjust processes based on current limitations (staff, \$, skill sets) and long-term management objectives.
- Use quarterly work planning and product deliverables to schedule and complete the tasks to be conducted.
- Use well-defined performance measures to track and evaluate progress.
- Use short-term project initiatives to:
  - Maintain existing working relationships and accomplish immediate objectives.
  - Build new working relationships and advance long-term goals, as established in the Chippewa County Land & Water Resource Management Plan and the Chippewa County Year Forest Comprehensive Land Use Plan.
- Do not compromise safety in the field.



---

### **Contributions Toward County Strategic Goals & Objectives**

As we move forward, the Department will continue to direct available resources to support the goals and objectives of the “Chippewa County Strategic Plan”, as established by the County Board of Supervisors in 2020.

The goals of the Chippewa County Strategic Plan are to:

- “
- *Effectively communicate information about programs, services, and resources to all residents and county employees*
  - *Develop additional sources of revenue and funding to meet emerging needs.*
  - *Improve access to mental health and drug treatment options*
  - *Maintain and proactively address threats to water quality*
  - *Support economic development in rural areas*
- ”

Moving Forward



---

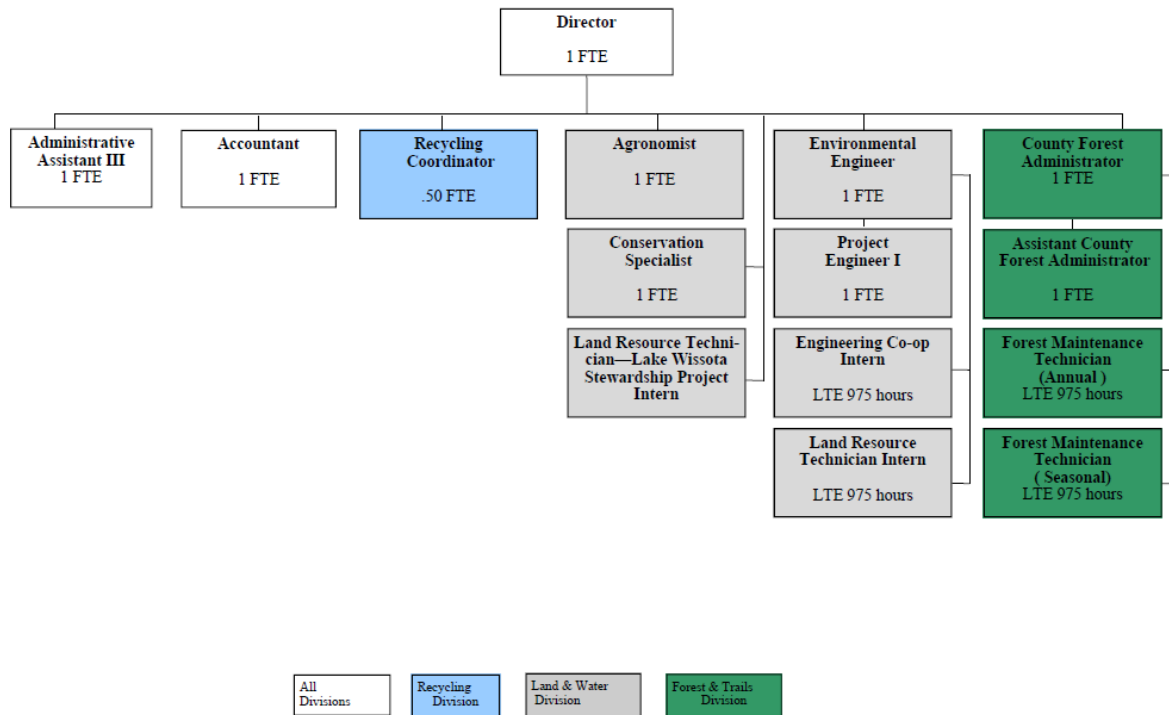
## List of Map Figures

### *List of Map Figures*

Map 1	Location of County Held Conservation Easements and CREP 15 Year Buffer Agreements
Map 2	Chippewa County 2024 Cover Crops
Map 3	Location of Permitted Non-Metallic Mines Meeting State NR-135 Reclamation Standards
Map 4	Location of Chippewa County Forest and Special Management Units
Map 5	Location of Chippewa County Forest Recreational Trails
Map 6	Type of Recycling Collection Programs and Extent of Joint Contracting by Municipalities Cooperating Under the Chippewa County Recycling Program

**Organizational Chart for  
Land Conservation Forest Management Dept**

6/19/2024



**Land Conservation & Forest Management Committee**

C. Bomar, Chair  
M. Peterson, Vice Chair  
J. Bergeron  
J. Flater  
R. Kempe  
J. Seidlitz  
J. Pingel, **Agricultural** Representative

**Land Conservation & Forest Management Staff**

L. Schweikert	Director
J. Schemenauer	Admin. Assistant III
K. Klingberg/E. Theiler	Project Agronomist
L. Richardson	Conservation Specialist
K. Clow	Environmental Engineer
T. Shutter	Project Engineer
J. Puig	Accountant
 M. Hansen	 Co. Forest Admin/Public Liaison
J. Larson	Asst. Co. Forest Administrator
A. Bohl	Forest Maintenance Tech Recurring LTE (0.5 LTE)
 R. Yohnk	 Recycling Coordinator (0.50 FTE)

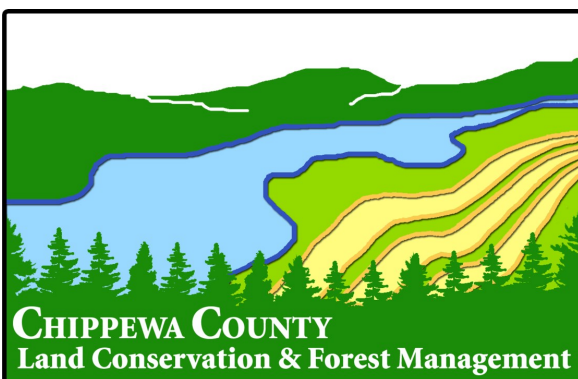
**Governing Committee & Department Staff**



---

## **This Performance Report:**

- Provides an overview of issues of local concern and explains how the Department directs available resources (\$, hours, skill sets) to address those concerns.
- Explains the department organizational structure based on three (3) divisions:
  - Land & Water Conservation.
  - Forest & Trails.
  - Recycling.
- Explains what each Division does and what was accomplished in 2024.
- Explains how the Department works with other agencies and with the community-at-large.
- Explains where the Department's funding comes from and how the funding is used to meet planned objectives.
- Explains the management approach and guiding principals that are being used to move forward.



**Our mission is to encourage  
“Stewardship for Sustainability” .....**

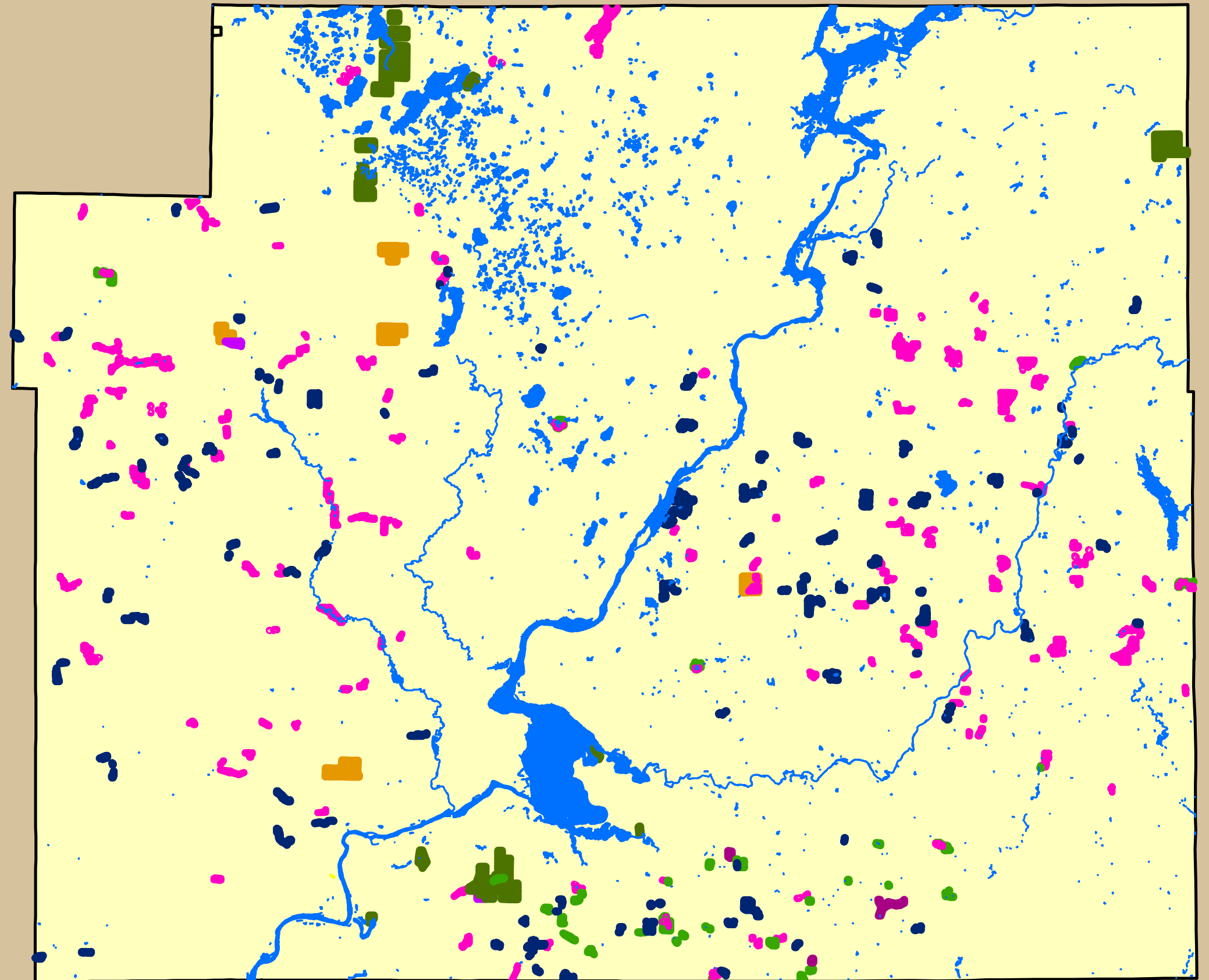
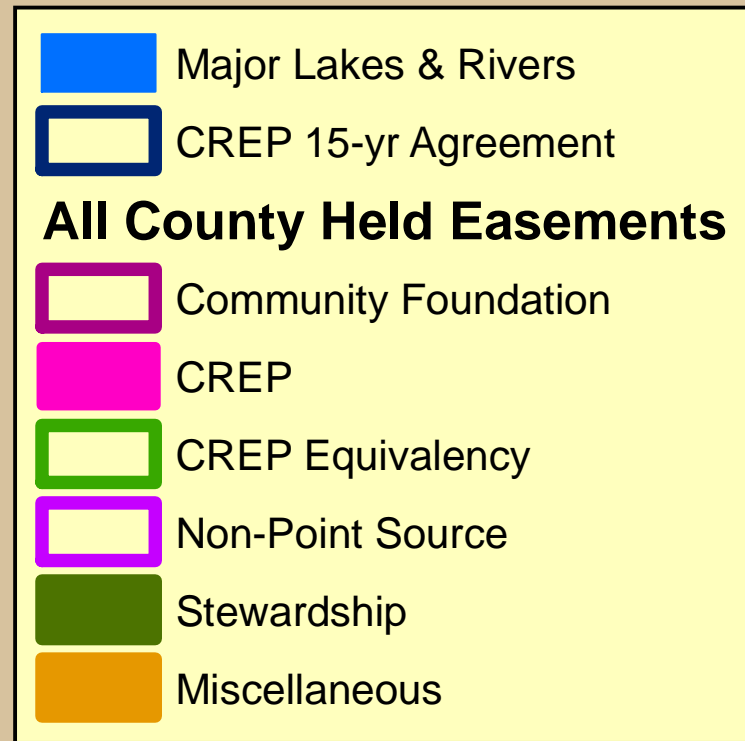
**to support a quality environment  
and productive economy.**

***“We provide the services that allow people to make  
the conservation choices that benefit us all.”***

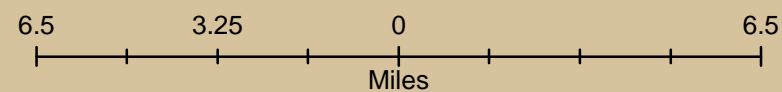
For information about this document, contact:  
Chippewa County Dept. of Land Conservation & Forest Management  
711 N. Bridge Street  
Chippewa Falls, WI 54729  
#715-726-7920  
[www.chippewacountywi.gov/lcfm](http://www.chippewacountywi.gov/lcfm)

---

# Location of County Held Conservation Easements and 15-Year CREP Agreements



March 2023





## Chippewa County 2024 Cover Crops

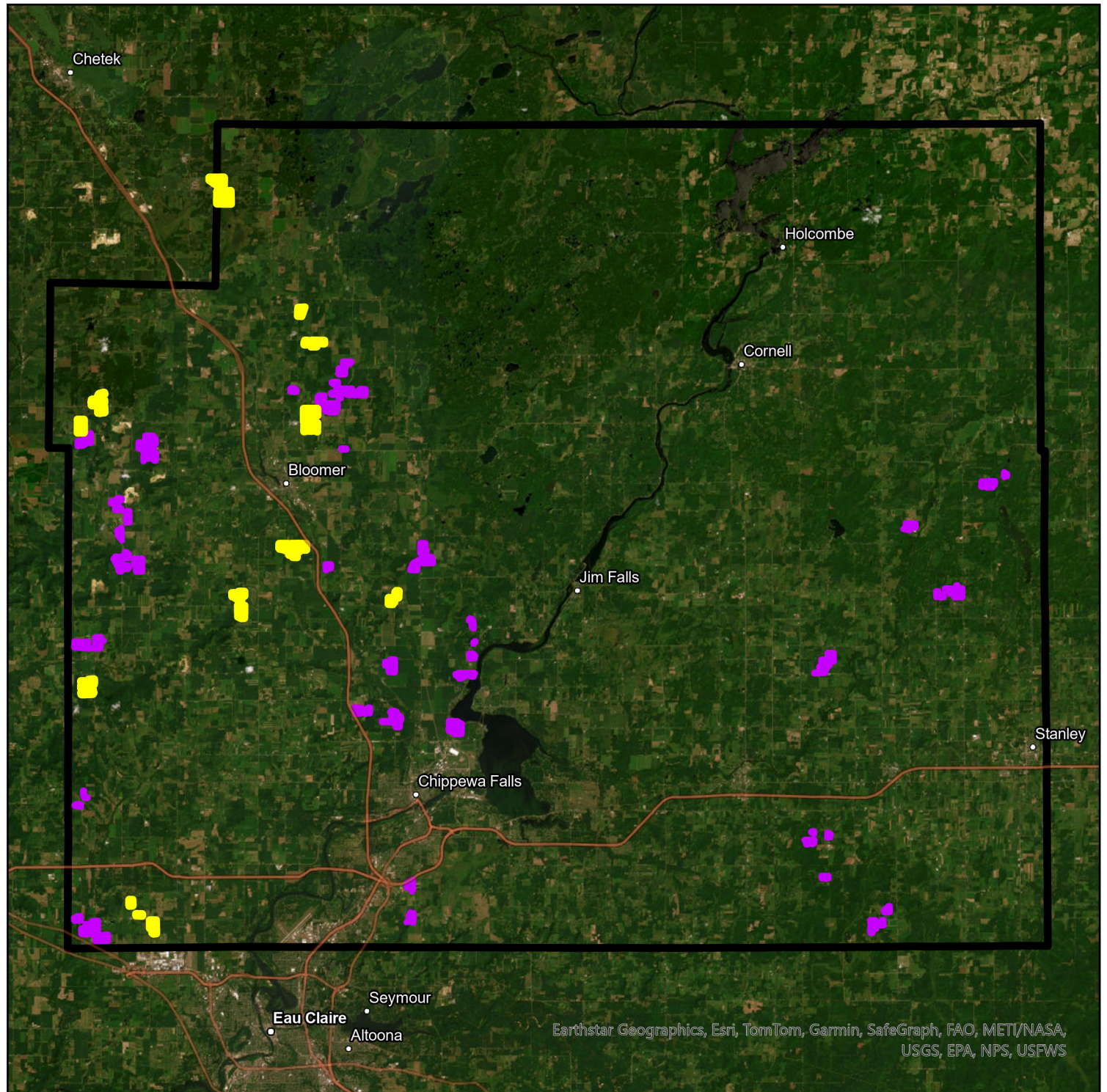
Emily Lee  
2/19/2025

### Legend

- ARPA
- SWRM
- County Boundary



0 2.5 5 10 Miles



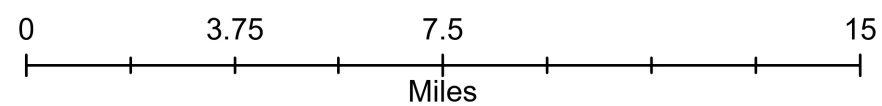
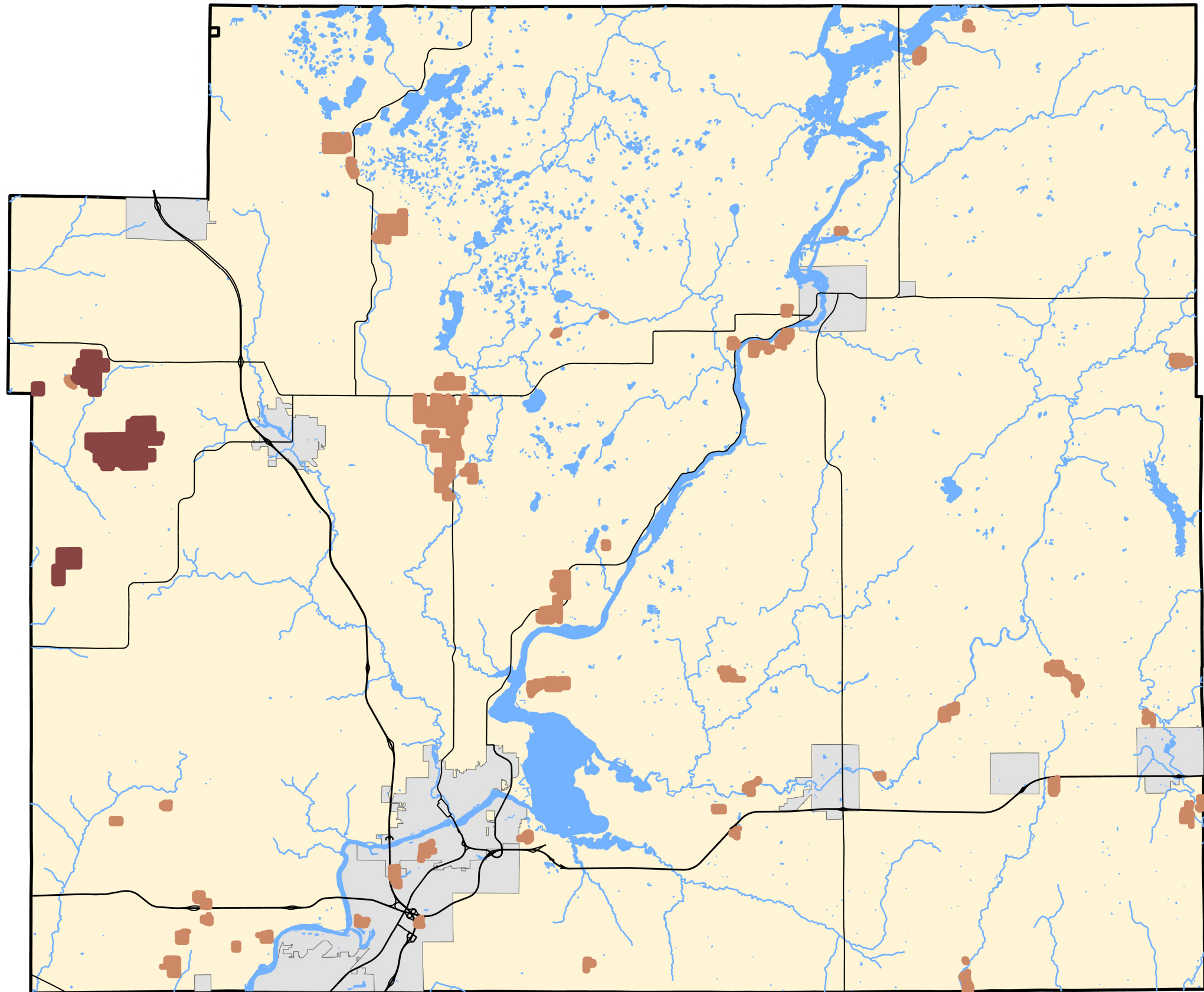
Earthstar Geographics, Esri, TomTom, Garmin, SafeGraph, FAO, METI/NASA,  
USGS, EPA, NPS, USFWS



# Location of Permitted Non-Metallic Mines Meeting State NR-135 Reclamation Standards

Bedrock Mines





Sand & Gravel Mines

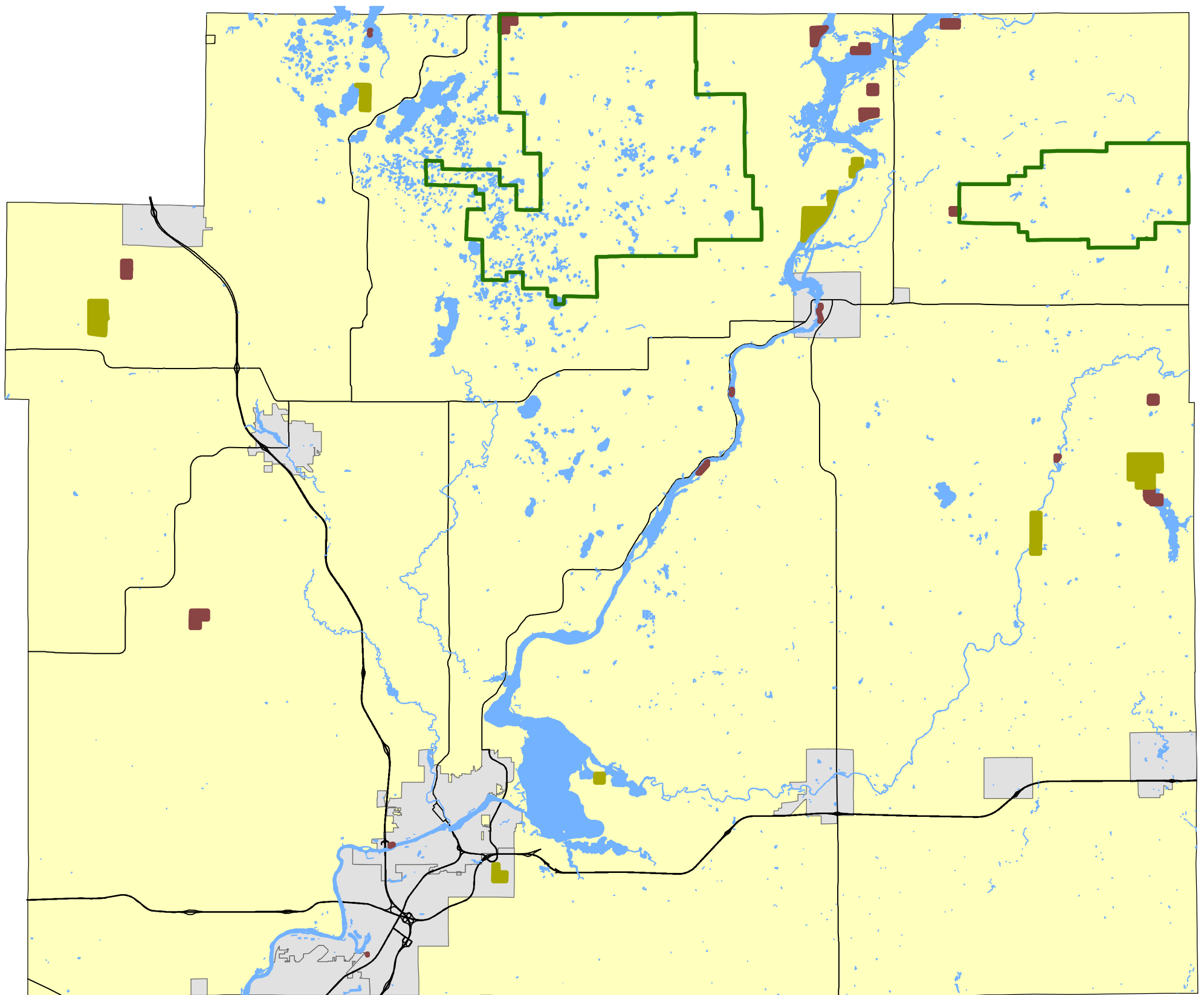


January 22, 2025

# Location of Chippewa County Forest and Special Management Units

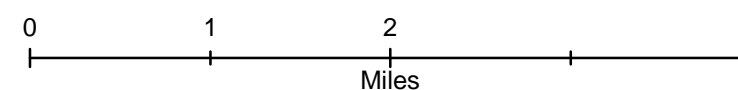
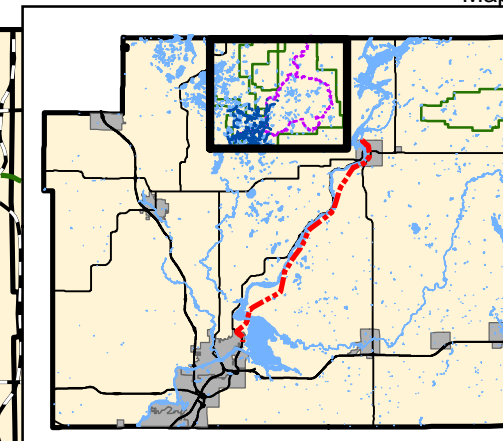
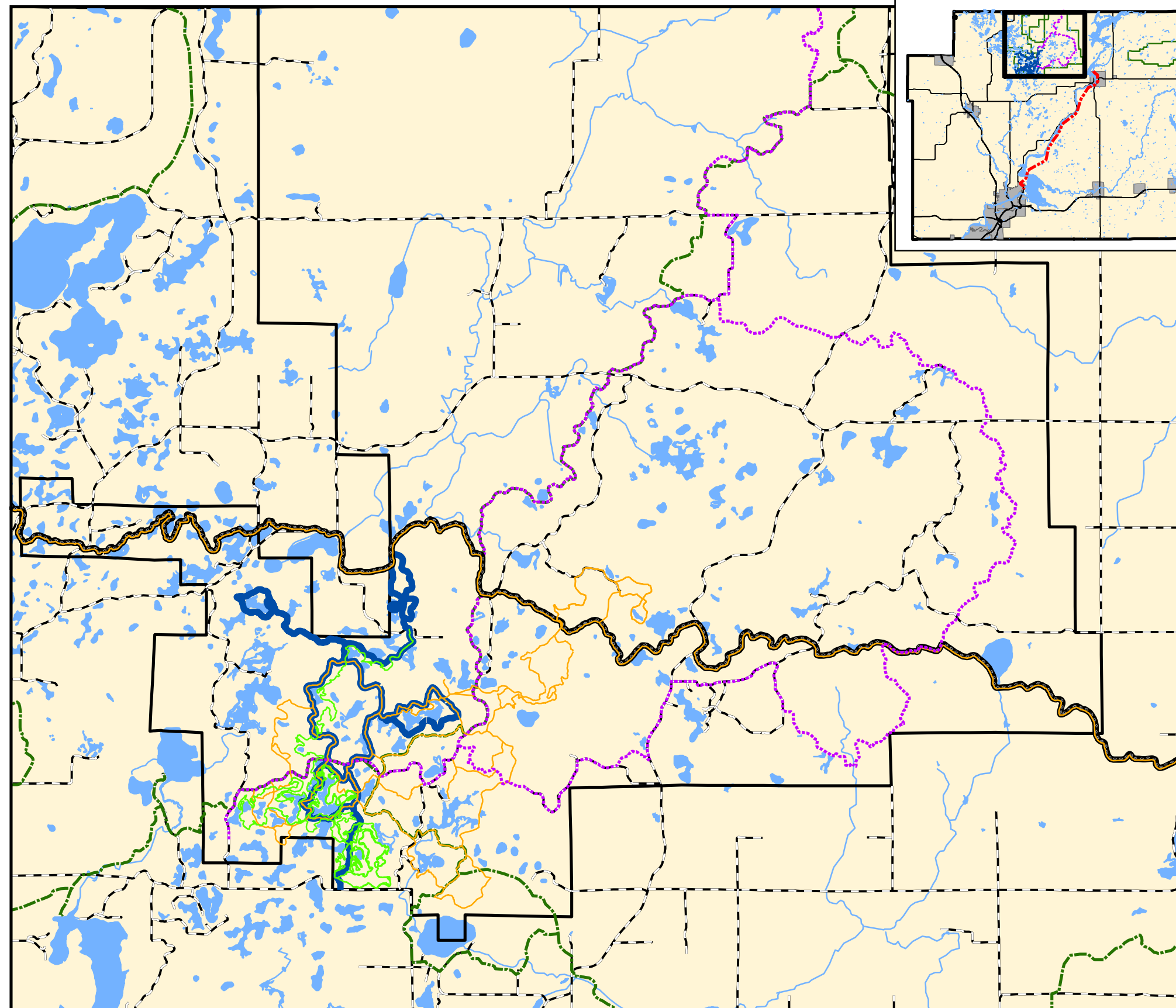
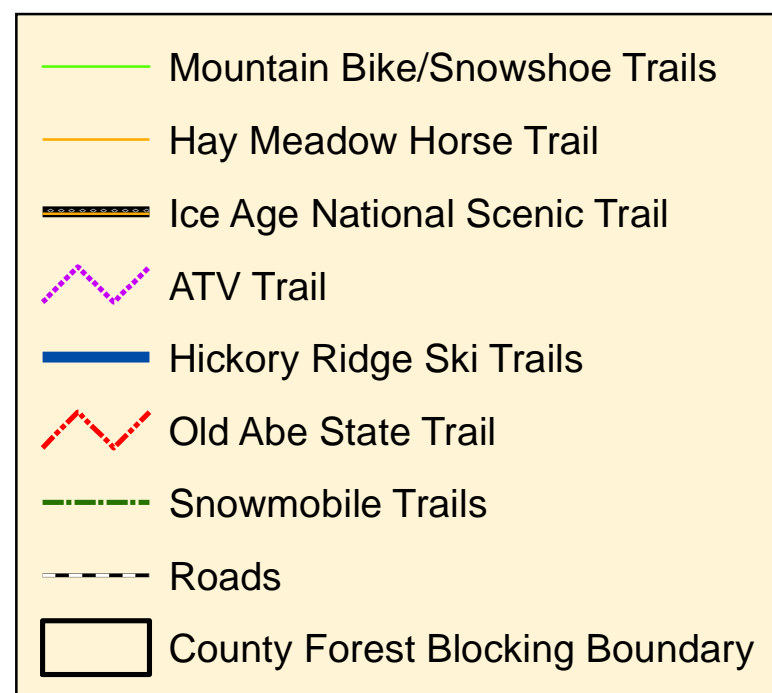
## Legend

-  County Forest
-  Co. Forest Blocking Boundary
-  Special Forest Mgt Units
-  Type B Tax Parcels



January 26, 2021

# Location of Chippewa County Forest Recreational Trails



1/3/2020

Path: H:\ADMIN\SEC\ANNUAL\map5.mxd



# Type of Recycling Collection Programs by Municipalities Cooperating Under the Chippewa County Recycling Program

Type of Recycling Collection

- \* Drop-off Recycling Center
- ◆ Curbside Pick-Up

