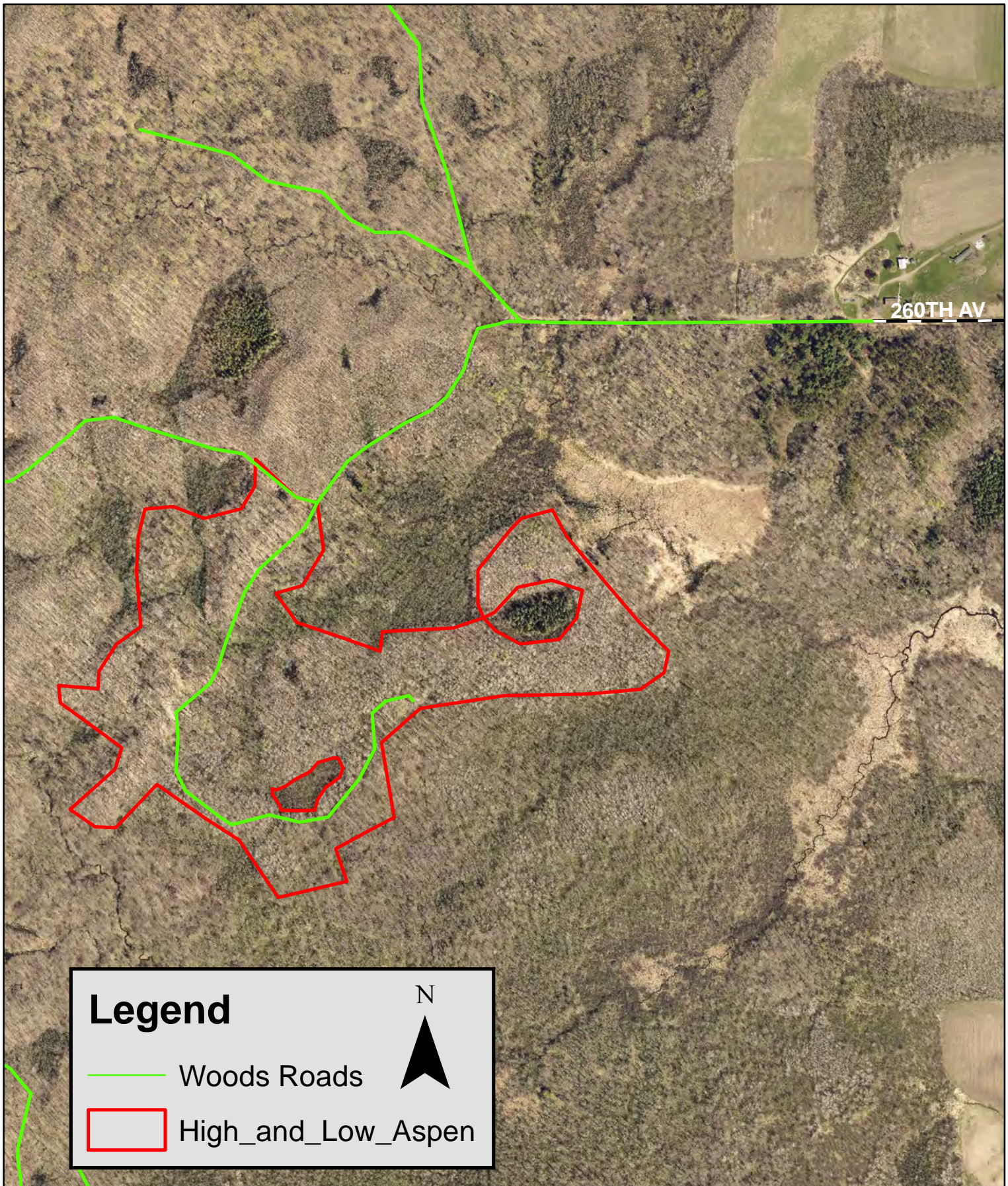


# High and Low Aspen

Tract 21-20 Approximately 37 acres



Map not to scale



## CHIPPEWA COUNTY TIMBER SALE TRACT 21-20

### High and Low Aspen

(approximately 37 acres)

Located in Section 35, T32N R7W, Town of Birch Creek

The table below contains an estimate of the amount of each species/product. There is no minimum bid for each species; however **the total minimum bid that is acceptable for Tract 21-20 is \$ 14,113.40.**

Species	Amount	
	Tons	MBF
Aspen cordwood	1950	
Mixed Hdwd cordwood (4" top) (4600 lbs/cord)	556	
Mixed Hardwood logs		15

#### Sale Area Description:

This sale will be a clear-cut to coppice the aspen in the stand. The boundaries of this sale are marked with red paint line. The sale is accessed off of 260<sup>th</sup> ave.

#### Cutting Requirements:

Aspen Harvest Areas: (37 acres) Cut all trees one inch in diameter and larger. **Do not** cut any boundary trees, pole sized oak, or conifers.

#### Special Conditions:

- **Harvest activity is permitted only when frozen ground conditions exist.**
- The contract length is approximately 2.5 years. In the event that the 2020-2021 and 2021-2022 winters are conducive to operation within these timber stands (as determined by the County), contract extension penalties may apply.
- Timber mats or other stream crossing BMP's approved by the County may be required. The County's timber mats may be available at no charge (first-come, first-served). Stream crossings shall be minimized.
- *Leave all snags (dead trees) unless they present a safety hazard. Use caution to limit the disturbance of Course Woody Debris (CWD) on the forest floor.* (ie) down logs greater than 12 inches in diameter.
- All logging debris must remain within the sale boundaries and kept from wetlands.
- All landing locations must be approved.
- All hardwood logs, (except aspen) 10" or larger on the small end will be charged at the appropriate saw log stumpage rate.