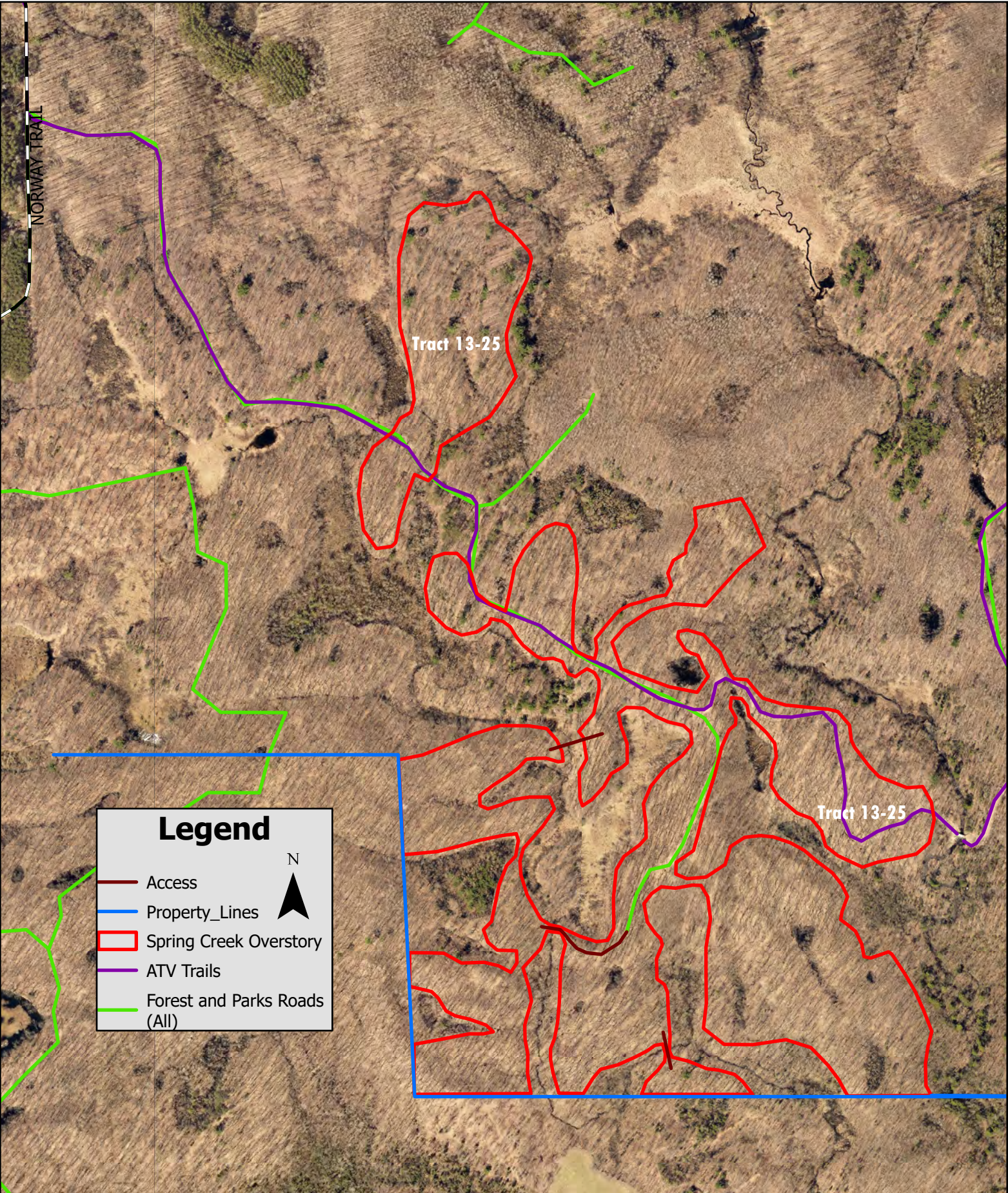


Tract 13-25 Spring Creek Overstory Removal  
Approximately 58 acres





## CHIPPEWA COUNTY TIMBER SALE TRACT 13-25

### **Spring Creek Oak Overstory Removal**

Located in T31N R7W Sections 4 and 9, Town of Cleveland

Total Sale Area: (approximately 58 acres)

The table below contains an estimate of the amount of each species/product. There is no minimum bid for each species; however **the total minimum bid that is acceptable for Tract 13-25 is \$ 86,000.00.**

| Species        | Amount |     |
|----------------|--------|-----|
|                | tons   | MBF |
| Oak cordwood   | 2150   |     |
| Red Oak Logs   |        | 185 |
| White Oak Logs |        | 30  |

### **Sale Area Description:**

The boundaries of this sale are marked with red and blue paint lines along private property. This sale is 58 acres of oak shelterwood overstory removal. This harvest system will be implemented to release existing oak regeneration and rotate the stand. The sale is accessed from the Norway Trail and the ATV Trail.

### **Cutting Requirements:**

Overstory Removal area: (58 acres) Cut all trees 1" or greater. Do not cut sale boundary trees (red or blue paint), pine or trees that are marked with yellow paint to identify riparian management zones and wetlands.

### **Special Conditions:**

- No harvesting activity will be allowed if rutting occurs.
- Oak Wilt Restrictions apply: No harvesting is allowed between April 1 and July 15.
- Timber mats may be required. County timber mats are available for use, at no charge, on a first come first served basis.
- Designated stream crossing areas must be used and restored following harvest.
- No equipment operation is allowed within wetland areas delineated by yellow paint.
- All logging debris must remain within the sale boundaries and kept from wetlands, lakes and trails.
- All landing locations must be approved. All merchantable timber that is removed along landings or skid trails must be utilized and accounted for through mill slips or log scales.
- *Leave all snags (dead trees) unless they present a safety hazard. Use caution to limit the disturbance of Course Woody Debris (CWD) on the forest floor. (ie) down logs greater than 12 inches in diameter.*
- All cordwood shall be utilized to a 4" top diameter.
- All hardwood logs, (except aspen) 10" or larger on the small end will be charged at the appropriate saw log stumpage rate.
- The contract length is two years.

**Map is Located on Back**