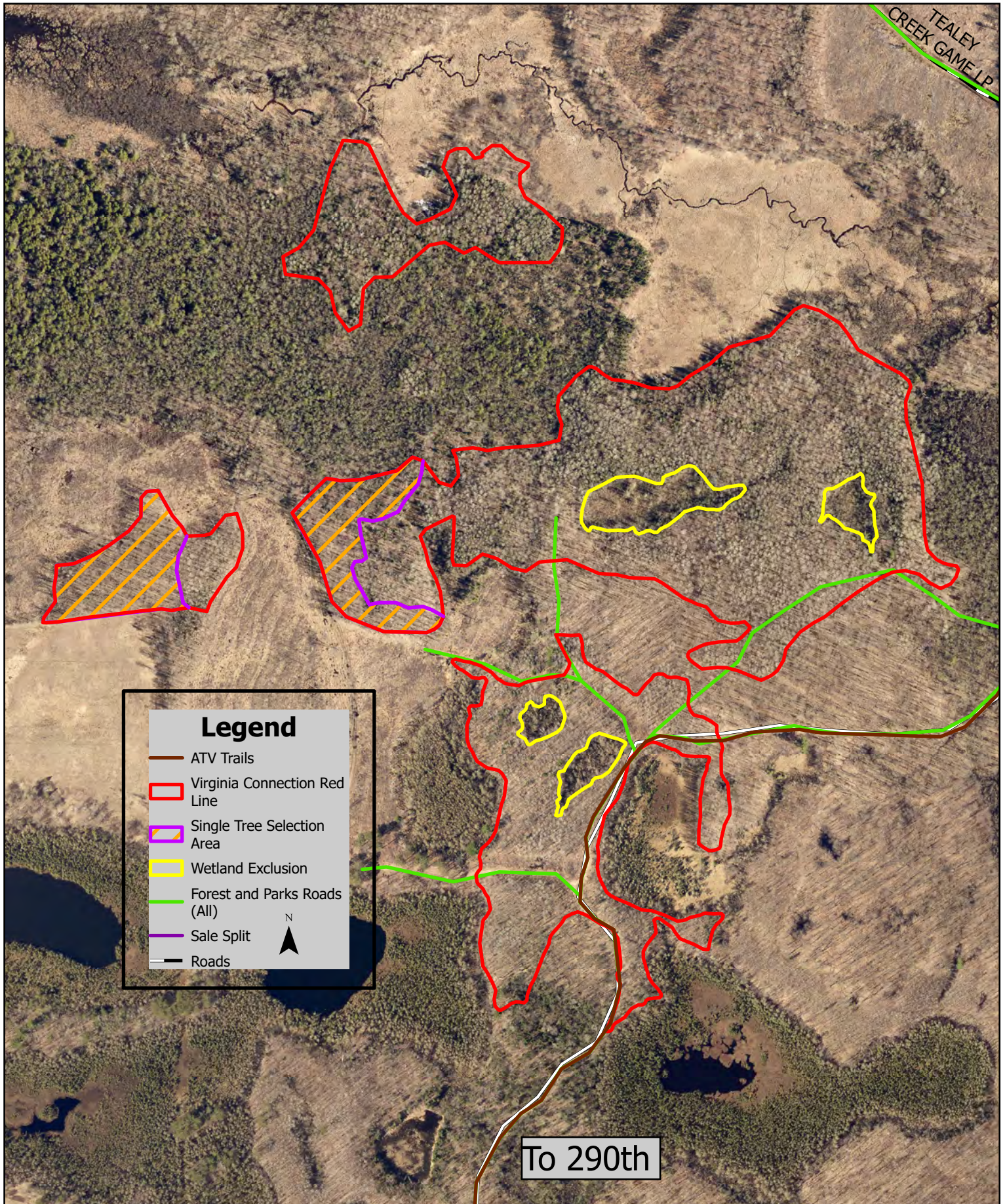


Tract 18-25 The Virginia Connection

45 acres aspen coppice 4 acres single tree selection



Map Not To Scale

CHIPPEWA COUNTY TIMBER SALE TRACT 18-25

The Virginia Connection

(approximately 49 acres)

Located in T32N R7W Section 8, Town of Birch Creek

The table below contains an estimate of the amount of each species/product. There is no minimum bid for each species; however **the total minimum bid that is acceptable for Tract 18-25 is \$ 47,570.00.**

Species	Amount	
	Tons	MBF
Aspen cordwood	1975	
Mixed Hdwd cordwood	860	
Baslam Fir cordwood	95	
Mixed Hdwd Logs		48

Sale Area Description:

This sale will be a clear-cut to coppice the aspen in the stand. Along with 2 small areas of single tree selection. The boundaries of this sale are marked with red paint line with purple separating the coppice and single tree selection areas. There are also wetland exclusion areas marked with yellow paint. No equipment is allowed to operate in these areas. Green marked trees in the Aspen stand will be left for wildlife. The sale is accessed on the ATV trail north of 290th.

Cutting Requirements:

Aspen Harvest Areas: (45 acres) Cut all trees one inch in diameter and larger. **Do not** cut sale boundary trees or green marked trees.

Selection Areas: (4 acres) Cut all trees marked with orange paint. Do not cut sale boundary trees.

Special Conditions:

- The contract length is 2 years.
- No harvesting activity will be allowed if rutting occurs.
- *Leave all snags (dead trees) unless they present a safety hazard. Use caution to limit the disturbance of Course Woody Debris* down logs greater than 12 inches on the forest floor.
- All hardwood logs, 10" or larger on the small end will be charged at the appropriate saw log stumpage rate.
- All cordwood shall be utilized to a 4" top diameter.
- All slash must lie within two feet of the ground.
- All logging debris must remain within the sale boundaries and kept from wetlands and trails.
- All landing locations must be approved by the county.

Map Located on the Back