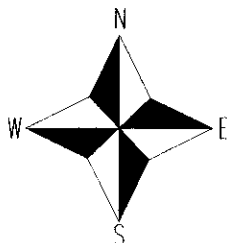
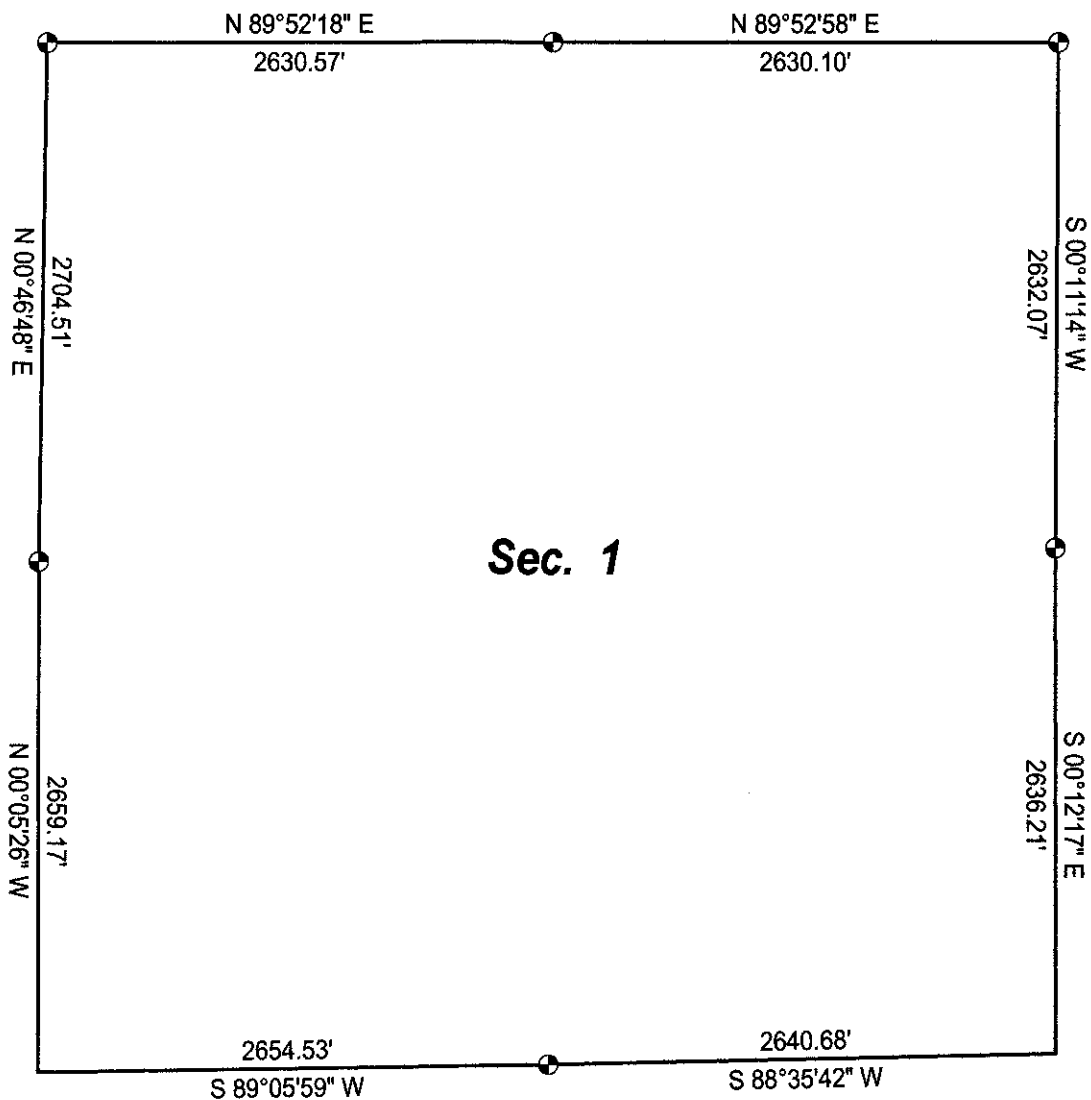


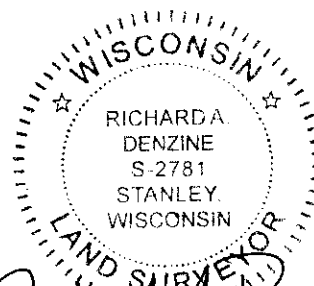
SECTION 1, T29N, R5W, (Delmar) CHIPPEWA COUNTY, WISCONSIN



RECEIVED

SEP 03 2013

CHIPPEWA CO.
LAND RECORDS



Richard A. Denzine
Aug. 30, 2013

Bearings referenced to the Chippewa County
Coordinate System NAD83 (1991).